

**Master Plan**  
for  
**Pennoyer Park**  
Kenosha, Wisconsin

Amended into the  
Kenosha Comprehensive Plan  
November 3, 2014







## Table of Contents

<b>1</b>	<b>Introduction</b>
<b>2</b>	<b>Site Analysis and Assessment</b>
<b>2</b>	<b>Public Process</b>
<b>4</b>	<b>Design Program</b>
<b>5</b>	<b>Preliminary Concepts</b>
<b>6</b>	<b>Preferred Concept Plan</b>
<b>6</b>	<b>Master Plan Recommendations</b>
<b>7</b>	<b>Preliminary Budget</b>
<b>7</b>	<b>Implementation</b>
<b>9</b>	<b>Appendix</b>
A	Context Map and Site Analysis
B	Stakeholder Interview Notes
C	Public Informational Meeting Comments
D 1-4	Visual Preference Survey Results
E 1-2	Preliminary Concept Plans
F	Master Plan
G	Amphitheater Section
H	Cost Estimate
I	Existing Conditions





# PENNOYER PARK



## INTRODUCTION

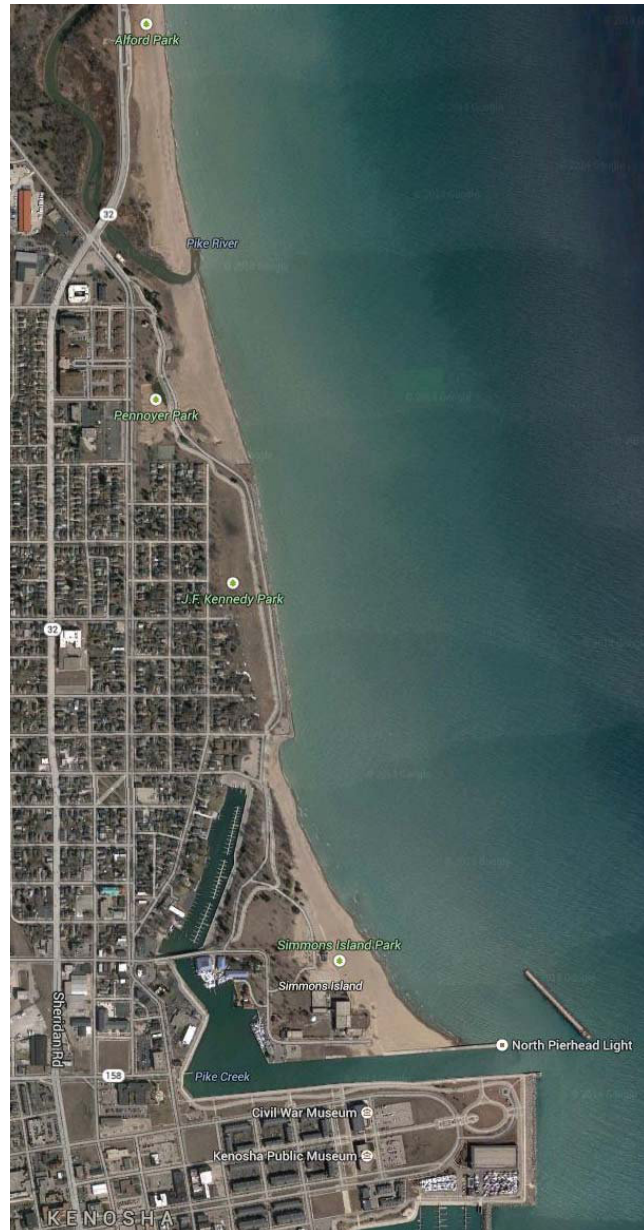
In January of 2014, the City of Kenosha retained the services of SAA Design Group, Inc. to assist with the master planning of two premier Lake Michigan waterfront park properties north of the downtown and directly adjacent to Simmons Island. Building on the momentum and successful planning process recently completed at Simmons Island, the design team established a schedule of meetings and public interaction to find the highest and best use for Kennedy and Pennoyer Parks. Given the adjacency and continuous flow of the two parks, it was decided to undertake a simultaneous planning effort for both parcels. During the second half of the process, the city determined that the final deliverables should stand alone as independent documents. To reduce confusion for future generations, this summary report contains identical front end language covering the steps and outcomes of the public process. Plan recommendations have been separated into individual park parcels for ease of budgeting and implementation.

Kennedy Park is located along the western shore of Lake Michigan near downtown Kenosha. Located east of 5th Avenue between 44th Street to the south and 38th Street to the north, this 24.4 acre community park is used for active recreation, community gathering, and is home to several events throughout the year.

Pennoyer Park is a 35 acre community park located at 35th Street and 7th Avenue. Pennoyer Park is immediately north of Kennedy Park and south of Alford Park. Major draws to this park include live music at the Sesquicentennial Bandshell, swimming at Pennoyer Beach, fishing and community events.

Both Kennedy and Pennoyer Parks are bordered by residential neighborhoods to the west and City of Kenosha park lands to the north and south. Kenosha's Lakefront park system extends continuously for nearly 3 miles from Carthage College south to Eichelman Park. Additional park lands exist to the south of Eichelman, but continuous network is disrupted by private development. The Lakefront Park system, a tremendous asset to the community, also supports a significant portion of The Pike Bike Trail, a popular trail network that includes a combination of on-street and off-street trail segments.

Kennedy and Pennoyer Parks are well established and well used within the community. Kennedy Park is home to



Kenosha Waterfront (Google Maps)

several major events, including the AMC Car Show and the Kite Flight, as well as gathering space for community events, practice and play space for the Boys High School Rugby Club, the Washington Middle School Football Team and baseball/softball league play. Large expanses of open, flexible use space is essential to the continued success of this park. Pennoyer Park accommodates spillover from some of the events at Kennedy Park, but has its own unique character and recreational draws. Live music, the swimming beach, fishing opportunities and quiet spaces with panoramic views of Lake Michigan make this an attractive venue for picnics and community gathering.

Transportation systems through both parks include segments of the Pike Bike Trail as the primary north-south bike and pedestrian corridor and Kennedy Drive essentially functions as a park road through these spaces and also serves as a vehicular north-south connection. Kennedy Drive is located immediately adjacent to the lakefront stone bluffs within Kennedy Park and jogs westward before entering Pennoyer Park where it cuts through the center of the park before intersecting 7th Avenue at 35th Street. Kennedy Drive has approximately 75 lakeside on-street parking stalls that are not formally marked.

## SITE ANALYSIS AND ASSESSMENT

Kennedy Park and Pennoyer Park each occupy approximately one half mile of Lake Michigan's western shoreline. The parks lie within an established, primarily residential neighborhood that is proximate to Kenosha's downtown core (See Appendix A).

## PUBLIC PROCESS

The Master Plans for Kennedy and Pennoyer Parks were prepared with input from elected city officials, Kenosha Park Commission, members of the community and City staff. The following is a schedule of meetings held during the planning process:

- Project Kick-off Meeting  
January 21, 2014 | City Hall
- Public Informational Meeting 1.1  
February 11, 2014 | Kenosha Public Museum
- Public Informational Meeting 1.2  
February 12, 2014 | Journey Church
- Stakeholder Interviews (See **Appendix B**)  
Week of March 4, 2014 | Telephone
- Public Informational Meeting 2.1  
April 8, 2014 | Kenosha Public Museum
- Public Informational Meeting 2.2  
April 9, 2014 | Journey Church
- Park Commission Meeting  
July 14, 2014 | City Hall
- Public Informational Meeting 3.1  
July 22, 2014 | Kenosha Public Museum
- Public Informational Meeting 3.2  
July 23, 2014 | Journey Church

A series of stakeholder interviews with several Alderpersons, community groups and event organizers were held after the initial Public Informational Meetings. The interviews were informal and persons interviewed were engaged in a conversation in an effort to learn more about their insights, concerns and ideas regarding the future use of Kennedy and Pennoyer Parks. Stakeholder interviews were conducted with the following individuals and groups:

- Alderman Haugaard, 1st District
- Alderman Schwartz (former), 2nd District
- Alderman LaMacchia, 5th District
- Alderman Mathewson (former), 8th District
- Alderman Kennedy (former), 10th District
- Alderman Orth (former), 15th District
- Tammy Conforti, Kenosha Dream Playground
- Dorie Westmeyer, Friends of Kennedy Park
- Joe Bullis, Boys High School Rugby
- Steve Knecht, Washington Middle School Football
- Scott Fisher, Kite Flight
- Mark Maurer, Kenosha Running Club
- Car Show, Sandy Malkin
- Kenosha-Racine Bike Club, Cathy Hicks

Note: Kennedy and Pennoyer Parks are within the 1st Aldermanic District. Framing questions and meeting notes can be found in **Appendix B**.

The first Public Information Meeting (PIM) was held on a Tuesday evening at the Kenosha Public Museum (February 11, 2014) and was the first of two similar public presentation and discussion forums held at different locations throughout the community. Approximately 70 community residents attended the meeting and it was structured around four components. The first exercise asked participants to list three things about the property that should be preserved or enhanced and three concerns or issues that should be addressed. The second exercise asked residents to express their vision of the park five to ten years in the future. Elements discussed include land use, aesthetics, and site opportunities. The third exercise was an interactive visual preference survey in which participants were asked to place a sticker next to images of park features or activities they preferred (green sticker) and those they did not desire in Kennedy or Pennoyer





## Kennedy Park and Pennoyer Park Future Opportunities

The following is a summary list of potential uses and future opportunities for Kennedy and Pennoyer Parks that were identified during the interviews and public input meetings.

- Expand family oriented events (Kennedy and Pennoyer)
- Encourage more park usage (Kennedy and Pennoyer)
- Additional amenities for events: electricity, water, restrooms, etc. (Kennedy and Pennoyer)
- Dog exercise area (Kennedy and/or Pennoyer)
- Opportunities for fishing, fishing events (Kennedy and Pennoyer)
- Expanded use of amphitheater for concerts, movies, etc. (Pennoyer)
- Expand picnic opportunities/facilities (Kennedy and Pennoyer)
- Opportunities for trolley route (Kennedy and Pennoyer)
- Expanded playground/Dream Playground (Kennedy)
- Expanded/improved trail and path network (Kennedy and Pennoyer)
- Expand beach activity opportunities (Pennoyer)
- Overlooks, view opportunities (Kennedy)
- Improved and expanded seating opportunities (Kennedy and Pennoyer)

## Aesthetic Issues

- Views to Lake Michigan (Kennedy and Pennoyer)
- Poor condition of Kennedy Drive, bike/pedestrian paths and parking areas (Kennedy and Pennoyer)
- Maintain open character; add trees where possible (Kennedy and Pennoyer)
- Improve appearance of built elements (Kennedy and Pennoyer)
- Improve/replace restroom buildings (Kennedy and Pennoyer)



Public Meeting (SAA)

## DESIGN PROGRAM

### Overview

The following design program statement is derived from project stakeholder interviews, public meeting input, discussions with the City of Kenosha staff, existing conditions analysis and on-site observations, opportunities and constraints analysis, and design ideas from the consultant.

### Goals of the Master Plan

The purpose of the Kennedy Park and Pennoyer Park master plans is to establish the lakefront as a community gathering and activity destination and as a place to hold community events, family gathering and enjoy the views of and access to Lake Michigan. The master plan process also provides an opportunity to study, and make improvement recommendations, to the existing vehicular, bicycle and pedestrian circulation network.

Goals of the master plan include improving and calming “cruising” traffic circulation along Kennedy Drive, provide a recommendation for improvements or alternatives for Kennedy Drive, improve circulation facilities for pedestrians and bicycles, improve existing park facilities, increase resident and visitor awareness of the lakefront park system and maintain opportunities for special events of varying scale. The project originally included locating the planned “Dream Playground” (an inclusive, accessible playground) within Kennedy but during the process, another location within the city was selected.

The following list represents broad topics identified throughout the process that established the design direction..

- Improve Traffic Issues
- Maintain Views
- Flexible Use Space
- Accessible Facilities (bathrooms, play, trails, etc.)
- Maintain and Increase Athletic Facilities
- Enhance Waterfront Access
- Improve Ped/Bike Safety
- Maintain ex. Special Events
- Expand Intergenerational Interaction
- Improve Site and Building Aesthetics

## PRELIMINARY CONCEPT PLANS

Three preliminary concept plans were prepared after the first two public meetings to represent many of the ideas discussed with City staff, stakeholders and the community. These concepts were presented to city staff and two of the initial three concepts were selected to be revised and developed into the preliminary concepts to be presented at Public Informational Meeting 2. The concept plans, labeled Concept A and B represent different solutions to the issues, hopes and concerns identified throughout the public participation process.

### CONCEPT A

**Circulation:** Concept A alters the vehicle circulation in the park to a no through traffic pattern. The removal of through traffic on the park road reduces the speed and quantity of vehicles within Pennoyer Park creating a safer pedestrian environment. The parking along the road is improved from angled to perpendicular stalls, allowing vehicles to utilize the parking stalls regardless of the direction of travel. The reconfigured parking lot (7) in **Exhibit E-1** is separated from the park road to reduce conflict between moving vehicles and vehicles attempting to park. The park road is terminated by a parking lot that allows convenient access to both Kennedy and Pennoyer Parks. The alignment of the terminal parking lot takes advantage of the views of Lake Michigan allowing visitors to park and observe the lake.

The lakefront pathway is relocated to the lakeside of the roadway to remove the current conflict point in which users of the path interact with motor vehicles.

**Park Amenities:** Enhancing existing amenities and activities is a premier component of Concept A. The enhanced athletic field allows U14 soccer and football practices. The current playground area is maintained with aging equipment being replaced as needed. Paths are added to the event area (5) on **Exhibit E-1** to increase ADA accessibility. Additional electrical connections are also added to the event area to allow a greater variety of uses. The existing restroom building location is maintained with both interior and exterior improvements allowing greater functionality and accessibility.

The Pennoyer Park Band Shell is enhanced with a formal amphitheater seating area allowing more visitors to attend events. The amphitheater will also accommodate ADA accessibility with the improved surfacing and walkways.

**Landscape Features:** Additional landscaping within Pennoyer Park is used to screen views, improve microclimates and enhance native shoreline vegetation. Along the south end of Pennoyer Park, vegetation is proposed to screen views of the tennis courts from the neighborhood. Additional planting adjacent to the event space and playground area create shaded zones for passive recreation. Dune restoration along the beach creates a unique aesthetic of a native Wisconsin landscape and enhances habitat along Lake Michigan. The dunes also create an educational opportunity for visitors of the park.

### CONCEPT B

**Circulation:** Alterations to vehicle circulation in Concept B focus on increased pedestrian safety and efficiency of circulation during events. Traffic on the park road is changed to no through traffic with a gated connection to 5th Avenue. The gated connection will remain locked with the exception of large events by which allowing exit only traffic on 5th Avenue will improve circulation during the events. On-street parking along the park road is enhanced from angled parking to perpendicular stalls to allow vehicles travelling in either direction to utilize the parking space. A majority of the parking is consolidated along the road to the perpendicular parking stalls to increase the amount of space for active and passive recreation in the remainder of the park.

The lakefront pathway is relocated to the lakeside of the road allowing trail users to traverse the entire length of Pennoyer Park without encountering a conflict with a motor vehicle.

**Park Amenities:** Additional site amenities improve the pedestrian circulation and gathering spaces throughout the park. The addition of the Pike River pedestrian bridge offers an alternative experience for users from the edge of Alford Park Drive to the beach and shoreline of Lake Michigan. Gathering nodes along the pathway (12) on **Exhibit E-2** creates opportunities for rest, picnics, and gatherings along Lake Michigan. The Pennoyer Park Band Shell is enhanced with an informal amphitheater. The existing lawn and benches are preserved with the addition of a terraced informal







## **Exhibit A - Context Map and Site Analysis**





LAKE MICHIGAN\*  
HIGH +581.5 RECORD  
NORM +579 MEAN  
LOW +576 RECORD  
TODAY +577 APPROX.

\* Data per the Great Lakes Environmental  
Research Laboratory/NOAA  
(Harbor Beach, MI Station)

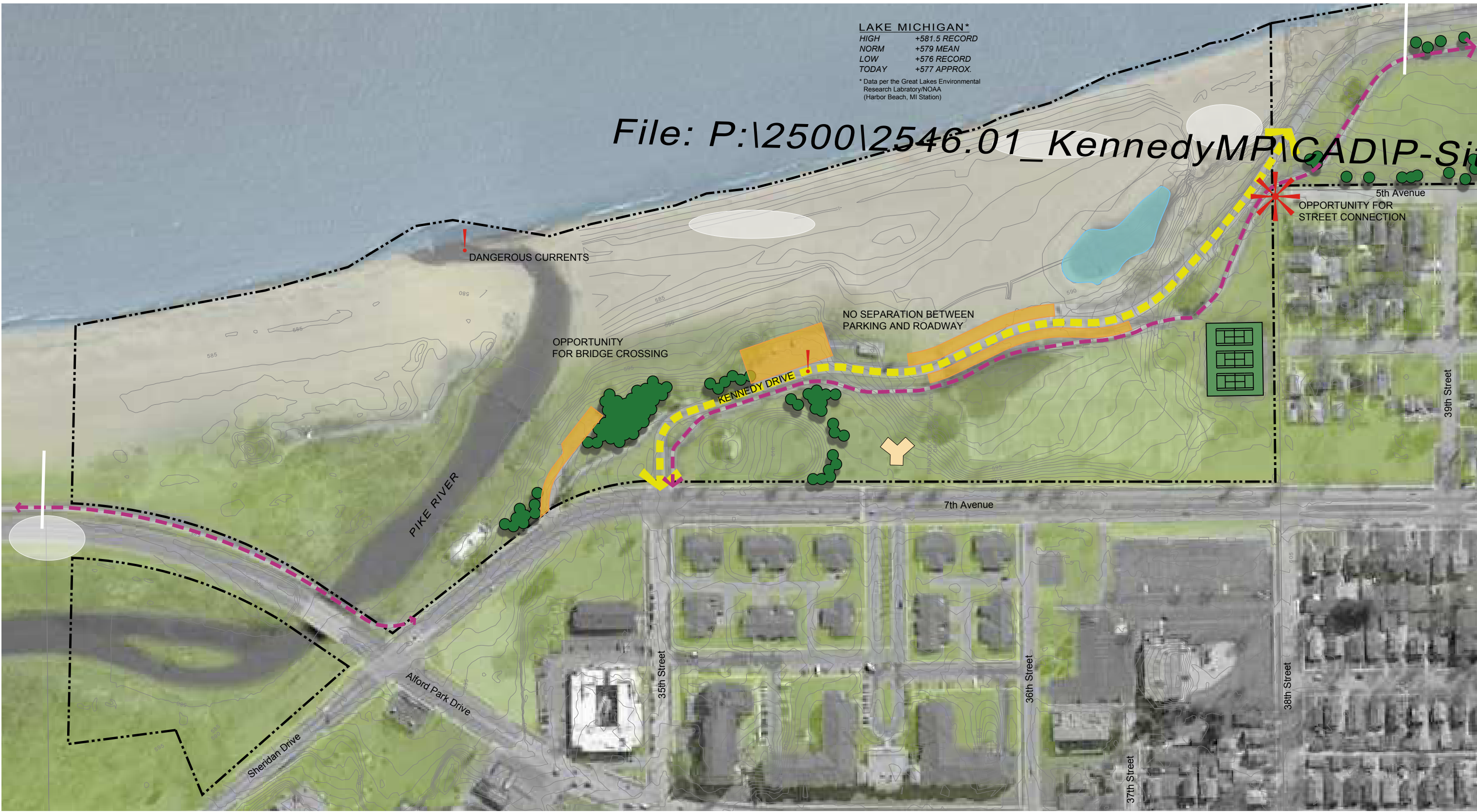
File: P:\2500\2546.01\_KennedyMPICAD\IP-SiteA

! DANGEROUS CURRENTS

OPPORTUNITY FOR BRIDGE CROSSING

NO SEPARATION BETWEEN PARKING AND ROADWAY

OPPORTUNITY FOR STREET CONNECTION



PIKE RIVER

KENNEDY DRIVE

7th Avenue

Sheridan Drive

Alford Park Drive

35th Street

36th Street

37th Street

38th Street

39th Street

5th Avenue

## **Exhibit B - Stakeholder Interview Notes**



#### **Stakeholder Interview Framing Questions:**

1. How does your group/organization currently utilize Kennedy and Pennoyer Parks?
2. Approximately how many people attend this event?
3. Are there specific times or dates that you plan on reserving park space or facilities?
4. Are your parking needs met? Do you use the parking lots or street parking?
5. Are there improvements that could be made to better facilitate your group/organization's activities or events? If so, what sort of improvements would be helpful?
6. Are there any existing conditions within these two parks that prevent or hinder use by your group/organization? If so, what are these issues?
7. As you may know, Kennedy Drive is in poor condition and this will likely be addressed in the master plan. What are your thoughts on the current location, use and future of Kennedy Drive?

#### **Kennedy and Pennoyer Park Master Plans Stakeholder Interviews**

Date: 03.05.2014  
Contact: Joe Bullis; Rugby  
262.496.6697

#### Discussion:

- Manages/coaches boys high school rugby
- Natural grass is important, views at Kennedy are nice
- Landfill under soil cap allows for good drainage, but can get very dry and hard in droughty conditions. City does not irrigate and this is fine with rugby group. Often the turf holds up well.
- Field area has a lot of undulations. Would like to see everything smoothed/graded out.
- Would really like to have (2) fields so that tournaments can be hosted at this site. Need to apply to host tournaments and need a minimum of (2) fields, but there could be up to several per year. May encourage Carthage to make use of fields. Tournaments bring a lot of people to the area and can be good for area businesses.
- Primary times of field usage are from early March to late June.
- Would like to have a power source (electric) near the fields.
- Use street parking, not parking lots. Athletes are told to be quiet and respectful of neighbors when parking. Have not had any problems with this.
- Likes Kennedy Drive extending through park. People slow and check out activity and it brings people through the park. Creating a loop road with Kennedy, Washington, etc. may be a good compromise.

Date: 03.13.2014  
Contact: Steve Knecht; Football, Washington Middle School  
262.359.6384

Discussion:

- The group uses an expanse of open space near the south end of the park for after school football practice.
- No goal posts are currently provided and none are needed for this group.
- Circulation patterns do not interfere with the group's use of the space and parking is not required.
- The group walks over to the park from Washington Middle School.
- It would be desirable to have some storage on site for football equipment.

---

Date: 03.05.2014  
Contact: Scott Fisher; Kite Flight  
414.305.3145

Discussion:

- The Kite Flight group holds an annual event first weekend in July.
- Use area from the north end of the park to about 500 feet south of parking lot at terminus of Washington Street (near backstop).
- Kenosha contacted Kite Flight to host an event at this park. Hold other events around the country.
- Need as much open space as possible. Keep free of trees, power lines, other vertical elements.
- Waterfront winds are important.
- Would be a problem is Kennedy Drive was moved inland (away from lake) due to space needed to set up and launch kites.
- Creating a loop option with Kennedy is ok as long as Washington doesn't run perpendicular into Kennedy. This would eat up valuable space. Need Washington to jog south first before connecting to Washington. The park is already tight on available space for their event and any reduction in usable land may be a deal breaker for this group. Removing a portion of Kennedy Drive to the north would be helpful.
- Kennedy Drive is completely closed for this event.
- Street parking is sufficient for their needs. Wouldn't mind more parking, but not sure it is worth giving up park land to develop.

---

Date: 03.05.2014  
Contact: Sandy Malkin; AMC Car Show  
262.654.5770x102

Discussion:

- Hold car show every 3 years. Usually last weekend in July. Not just AMC car show, but many others.

- Approximately 700 cars are brought in and the crowd is typically between 800-1,000 people.
  - Center of activity is parking area at Washington Street. Swap meet occurs here, registration, vendors, etc.
  - Cars start to show up on Friday and event goes through Saturday afternoon. Cars are typically trailered to Kenosha and trailers dropped off at various sites throughout city, including Indian Trail High School.
  - Cars park on lawn areas and access via parking lot and Kennedy Drive.
  - Depending on crowd, the event may spill over into Pennoyer.
  - Portable restrooms are brought in and located near backstop.
  - City helps with power needs and water.
  - Additional power sources would be helpful.
- 

Date: 03.10.2014

Contact: Alderman Eric Haugaard  
262.818-2628

Discussion:

- Kennedy Drive is not financially practical to rebuild, heard estimates are between 1.5-2million, public dollars are better spent otherwise
  - Neighborhood parking has not been an issue for special events and special use groups
  - Is in favor of public use of the space, likes the special events and would like to see other options
  - Safety is the priority for the park, new concepts should ensure this is first priority
  - Believes that the bike/ped path should be by the lake to get users closest to the natural resource
  - Keep the space as flexible as possible to allow use of many user groups
  - Tennis is not used very often, is the Carthage facility open to the public?
  - Enjoys the use of Pennoyer bandshell, noise in the neighborhood has not been reported as an issue
  - Is concerned about crash and traffic history in the park (Kennedy), has police records and powerpoint of items
  - Proud of the Kenosha waterfront system, wants to see a continuous off-road network allowing the public access
- 

Date: 03.10.2014

Contact: Alderman Chris Schwartz  
262.358.6545

Discussion:

- Left message
-

Date: 03.10.2014

Contact: Alderman Rocco LaMacchia Sr  
262.945.7280

Discussion:

- Love to see people using the space
  - Continue programming special events
  - Safety is a concern
  - Very proud of the city's lakefront park system
  - Happy to support staff efforts to continually improve public space
- 

Date: 03.10.2014

Contact: Alderman Kevin Mathewson  
262.237.8501

Discussion:

- Kennedy Park seems to be the best location for Dream Park, he is happy it ended up here
  - Kennedy Drive should be rebuilt and possibly raised for better lakeviews. It is a popular attraction for Kenosha residents
  - He is open to other ideas about getting people to the water. Access is main concern
  - Pennoyer is not very ADA friendly. Trails need work, parking lots, etc
  - Bathrooms at Pennoyer are in need of improvements
  - Public events such as the music concerts, festivals are excellent. These should all continue if possible in the facilities.
- 

Date: 03.10.2014

Contact: Alderman Anthony Kennedy  
262.496.1460

Discussion:

- The main attraction of the two parks is the waterfront
- Kennedy Drive is in the wrong location, shouldn't be in between the park and the water. Can it be moved west or eliminated? Other options?
- Driveable access to the water is not as important as ADA access and public safety
- Would like to see an uninterrupted bike/ped system from Pennoyer to Downtown harborwalk
- Likes the bandshell, but ADA access could be better. the Dream park discussion has prompted a more heightened awareness in all of the parks in the city
- Special events in the parks are a very good thing. Thanks to Jeff Warnock for seeing the vision
- He is not advocating for moving the dream park out of Kennedy, but wanted to make sure that all options were explored and the site is actually conducive to building such a structure

- These two parks function like the city “central park” with the only real spot of great open lawn. Should be maintained as such
- 

Date: 03.10.2014

Contact: Alderman Michael Orth  
262.344.3663

Discussion:

- Left message
- 

Date: 03.11.2014

Contact: Tammy Conforti; Kenosha Dream Playground  
262.358.2004

Discussion:

- Wants parking lot by the new playground
  - New bathroom facility should be very close to playground and fully accessible
  - Best location may be where the existing structure is because of sanitary and water existence
  - Wants hip pad activators for doors
  - Dreampark should be 10k sf in size and surrounded by a fence
  - Fence will be donor pickets
  - Would like a separate pavilion
  - Drinking fountain should have two bowls (high and low)
  - Desire for shade over the playground, possibly attached to the posts
  - All facilities should be interconnected
  - Would like the existing playground removed
- 

Date: 03.05.2014

Contact: Cathy Hicks; KR Bike Club  
262.939.1577

Discussion:

- President of KR Bike Club.
- Park is used as a pass through space. Could be used as a stop along route if restrooms were improved and drinking water provided (water fountain).
- KR Bike Club works with Velodrome club to teach and train kids how to ride bikes. Kennedy park is a good place for that.
- Kennedy Drive is in poor condition and dangerous, so group only uses bike path.
- Bike path can feel narrow at times.
- Kennedy Drive relocation/demolition/repair not a priority or issue for Bike Club, but would be nice to have more space for bikes.
- Priority is to keep bike path pavement in good condition for bikes.



- Signage would be helpful for trail system. Sign to identify as bike trail, wayfinding and directional signage.

---

Date: 03.05.2014

Contact: Mark Maurer; Kenosha Running Club  
Markmaurer624@gmail.com

Discussion:

- Running club makes use of all lakefront parks and paths most days throughout the year.
- Turkey Day Run is a big event. Race starts at museum, goes north to Carthage and back. Rest stops are set up at Pennoyer with portable restrooms.
- Kennedy Drive is unsafe for running. Wouldn't mind eliminating Kennedy Drive from park – no reason for vehicles to be on lakefront.
- Restroom improvements are important.
- Path network is used, but can be impassable during flood events and during winter months. Path has numerous low spots that can create hazards.
- Ideal plan for Pennoyer and Kennedy would involve removing Kennedy Drive and creating a trolley loop along lakefront and nearby streets.

---

Date: 03.05.2014

Contact: Deputy Chief Miskinis; Kenosha Police Department  
262.605.5216

Discussion:

- Brief discussion on 03/05. Deputy Chief Miskinis wants to discuss with staff and Chief to get consensus from dept. before responding in detail.
- In general, the issues that Kenosha Police deal with all revolve around Kennedy Drive. Other park features/amenities are not of significant concern.

---

Date: 03.05.2014

Contact: Dorie Westmeyer; Friends of Kennedy Park  
dorie@doriwestmeyer.com

Discussion:

Friends of Kennedy Park currently consist of about 100 neighbors who live in the Kennedy Park and Pennoyer Park neighborhood.

This is a collection of common themes and individuals responses to the questions posed by SAA design consultants as part of the Kennedy Park & Pennoyer Park master planning process. In instances where one person expressed a particular opinion, (1) is placed after that comment.

## How do Friends of Kennedy Park currently utilize Kennedy and Pennoyer Parks?

### Kennedy Park

Many enjoy Kennedy Park for picnics, walking, running, biking, dog walking, playing softball, football, exercising, snow shoeing and cross country, badminton, volleyball, soccer, walk on the rocks & practicing golf swings. People come from all over to watch the various sports in the park like rugby, soccer and practice and home field games for Washington Middle School football. It's easy for football kids to walk there & saves \$\$ on busing them elsewhere. (1) It is a great location for walking out and looking at the water & reflecting. The shaded areas by the bathroom at Washington Road is a nice natural setting great for very large and small picnics. Including playing volleyball or softball and bringing in music bands. (1) Playing with grandkids on the playground equipment (1) and the peacefulness and serenity of jogging along the lakefront (1) were also mentioned.

Friends of Kennedy Park and people from all over attend events like The Kite Flight which has been here since 2001 and the Kenosha News estimates 7500 people attend annually. Kennedy Park has the big open space they need and lake winds for flying kites. Friends of Kennedy Park like going to the car shows and they are also well attended. Many of the cars were manufactured in Kenosha (1). Exhibitors have easy access by Kennedy Drive and the large open space allows them to spread out for a nice show (1). The 4<sup>th</sup> of July is a big event at Kennedy Park. Area neighbors & hundreds of Kenoshans enjoying picnicking all day and watching the city's great fireworks show. Overall, we enjoy the wide open green space, the beautiful unobstructed lake views throughout park, the vast openness and the variety of great events in Kennedy Park because of the wide open space. A few people commented regarding Kennedy Drive -the motor access is nice for all (1) and there isn't a lot of cruising (1). It's a safe neighborhood park for families with small children (1).

### Pennoyer Park

Many enjoy the beautiful lake views from any spot and its easier here to enjoy watching lake activities like boating, sailing and parasailing. While neighbors typically walk to Pennoyer Park, it's also easy for people to get there by 7<sup>th</sup> Avenue and Kennedy Drive without going through neighborhood streets and it's easy to park.

Many like listening to concerts at the band shell (its unique), playing tennis, sitting and walking on the beach, walking the trail and fishing. They like Pike Creek. They like the fish hatchery. (1) They enjoy all the shaded areas for resting and viewing the lake. And there is gorgeous open green space for kids to play on. They would like to see something special go there, like the playground.

They also like the vendor stands there for food sales. They felt the vast majority of space there is unused.

And many like the easy access for seniors and how convenient it is for St. Catherine Commons senior community.

**Approximately how many people attend this event?**

Friends of Kennedy Park do not currently sponsor an event.

**Are there specific times or dates that you plan on reserving park space or facilities?**

Friends of Kennedy Park do not currently have an event planned.

**Are your parking needs met? Do you use the parking lots or street parking?**

**Kennedy Park**

The neighborhood residents walk to the park. When there are large events at Kennedy Park, parking can spill over onto the streets and sometimes can be challenging. However that is preferred to taking lakefront park land and building a parking lot. If a big drawing attraction was placed in Kennedy Park permanently, parking would be a problem for everyone.

**Pennoyer Park**

Parking at Pennoyer is usually good. There are many more parking options vs. Kennedy Park. There are beach parking lots, fishing parking lot, parking along 7<sup>th</sup> avenue, a former hospital parking lot across the street. Typically there is plenty of parking at Pennoyer. It can be an issue with band shell performances. But this is only once a week for a couple months in the summer. And 7<sup>th</sup> Avenue and the lot across the street can accommodate parking.

**Are there any existing issues or conditions in Kennedy Park or Pennoyer Park that could prevent or hinder use by you, or your group/organization? If so, what are these issues or conditions?**

**Kennedy Park**

Some mentioned the park is fine as is. Others said with any large thaw or rain there are large areas of standing water. The geese love the water. (1) There are a lot of Canadian geese that leave bird droppings – could be a health hazard. Also the Park is exposed to cold winds off the lake and can be a lot cooler; and there are weather extremes – dense fog, wind, rain & snow blowing – not seen as much in other parts of the city. The rocks are loose, have gaps and can be dangerous to walk on.

They are concerned about any permanent structure or large playground and regional attraction going in Kennedy Park. It will increase traffic & congestion on a regular basis and interfere with longstanding events and groups that need large spaces; could split the park if it goes by Washington Road and make the overall park less functional for many. It will forever change the landscape of the open lake views from anywhere in the park. Also there are many homes in the immediate area that will be impacted. They don't want to lose lakefront green space to add parking or lose trees for a playground. Particularly trees by Washington road that were placed in memoriam.

Large destination playgrounds draw bus loads of visitors according to similar accessible playgrounds in other cities and playground developers and this is a concern. While parking can be competitive at certain times, parking will become a constant problem and they do not want to take lakefront park green space to create a larger parking lot. Also sometimes the bathroom is locked (1).

#### **Pennoyer Park**

The majority of responses said they had no issues. There is now a nice open space in the middle. It used to be a problem with flooding but the city fixed that. The dredging filled in the low lying area. They believe this would be a great place for the playground. Some commented that the bike/pedestrian path is rough. One person said having children & pets playing on pcp contaminated soil from all the harbor dredgings is a concern. She suggested turning the area into a flower garden for seniors to walk and sit (1).

**Are there improvements that could be made to better facilitate your group/organizations activities or events? If so, what sort of improvements would be helpful?**

#### **Kennedy Park**

The resounding theme was to update the bathroom and fix the road. Kennedy Drive should be upgraded. It's a beautiful drive. Many felt the rocks should be fixed as they are dangerous. And it would be nice to have some benches in the shaded tree areas. The trail needs to be maintained and cracks in the pavement need to be fixed.

One person suggested topsoil and finish grading for the heavily used areas ...sports areas and maybe some better quality informal parking along the road. (1) One person suggested a larger parking lot at the end of Washington Road and it should be black topped. She would also like to see an enclosed dog park south of Washington road in an unused area. And a handicapped playground near restrooms and picnic area (1).

#### **Pennoyer Park**

The bathroom should be improved. It would be nice to have a boardwalk and a wheel chair accessible beach. The beach could be more utilized. Since the city fixed the flooding problem in the center, it would be a nice open place to have the playground here for kids. One person suggested an ice rink in season (1) and one person suggested a garden for seniors to sit and walk (1).

**As you may know, Kennedy Drive is in poor condition and this will likely be addressed in the master plan. What are your thoughts on the current location, use and future of Kennedy Drive?**

It's a beautiful scenic drive. Many felt the road should be fixed. Keep it open. Regarding specific comments about when the road should be open, keep it the same (1), keep it open later (1), keep it open until 8pm when it is still light enough to see the view (1). Also, don't block the view with trees. And possibly add some informal parking.

define  
enhance  
sustain

Many believe and one longtime resident said before Kennedy Drive was there traffic was heavy and fast down 5<sup>th</sup> avenue. If you close it, that will be a problem again. One person said Kennedy Drive should be kept in poor condition to keep speed down. Or add speed bumps. (1) It's been with us too long to discontinue (1). Go easy on tree planting for everyone's enjoyment (1).

Other comments stated that both parks are the jewels of Kenosha and careful consideration should be given before placing a large playground and facilities. Regarding the playground going in Kennedy Park, the south end already has much traffic from the boat launch (1) and the Washington road area has a lot of activities already. Placement in Kennedy Park would be unnecessarily disruptive to many . Pennoyer Park is adjacent to Kennedy Park, has all the advantages of Kennedy Park and more – more parking, a beautiful beach, other activities to make it a true destination and you can get right there by public transportation. So more can enjoy it. The large space between the tennis courts and band shell would be perfect. And it would be a more natural setting, less disruptive to the area and it is welcomed by the senior community in St. Catherine Commons. And there is room for expansion.

Disclaimer: Comments are provided for park planning purposes only.

## **Exhibit C - Public Informational Meeting Comments**









PUBLIC INFORMATION MEETING # 1.1  
SIGN-IN SHEET

KENOSHA PUBLIC MUSEUM  
FEBRUARY 11, 2014, 6:00 - 7:30 PM

NAME	ADDRESS
Tammy J. Conforti	8547-33 <sup>rd</sup> Ave 53142
Lance Gordon	6346 5 <sup>th</sup> Ave 53143
Scott Gordon	5204 4 <sup>th</sup> Ave 53144
Carl Wilson	7525- 2 <sup>nd</sup> Ave 53143
Mike Lemcus	625 52 <sup>nd</sup> St. 262-653-4147
John Weiss	4052 - 5 <sup>th</sup> Ave
Mary Jane Weiss	4052 - 5 <sup>th</sup> Ave
Kim Leipzig	4103 5 <sup>th</sup> Ave
Dorie Westmeyer	4056 5 <sup>th</sup> Ave
Scott Plovranich	4103 5 <sup>th</sup> Ave
Jill Matther	3565 98 <sup>th</sup> Pl.
MARK MODRY	5230 - 38 <sup>th</sup> Ave 53141
Mary Perrine	2117 - 38 <sup>th</sup> St 53140
Linda Wilde	2003 36 <sup>th</sup> St 53140
Gisela Sosa	8710 82 <sup>nd</sup> St 53158
Eric Bartel	3824 7 <sup>th</sup> Ave
Eric Haugaard	3818 5 <sup>th</sup> Ave 53140
Will Liggett	3828 5 <sup>th</sup> Ave 53140
Chris Eckhardt	4103 - 6 <sup>th</sup> Ave 53140
Grace Kolakowski	410 44 St 53140
Donna Thew - Funk	609 - 78 <sup>th</sup> St





PUBLIC INFORMATION MEETING # 121,1

SIGN-IN SHEET

Kenosha Public Museum

~~JOURNAL CHURCH~~

FEBRUARY 12, 2014, 6:00 - 7:30 PM





11

NAME	ADDRESS
Pamela Whyk	409 B 55 <sup>th</sup> St
Alex Harder	43 <sup>rd</sup> Street
Elizabeth Covelei	41 <sup>st</sup> Street
Doug Despin	4010 - 7 <sup>th</sup> Ave
Pat Tomshack	515 39 <sup>th</sup> St
John Tomshack	11
David McRoberts	3806 - 5 <sup>th</sup> Ave
Dinner Brydger	6427-81 St 53142
David Cole	W610
S.R. Mills	4011 80 <sup>th</sup> St Kenosha
Richard Kinch	<del>3612</del> 3624 Sheridan Rd 53140
Jacqueline Sieracki	212 B 55 <sup>th</sup> St. Kenosha WI 53140
Ellen Ferwerda	7824 - 5 <sup>th</sup> Ave. Kenosha, WI 53143



PUBLIC INFORMATION MEETING # 1.1  
SIGN-IN SHEET

KENOSHA PUBLIC MUSEUM  
FEBRUARY 11, 2014, 6:00 – 7:30 PM

NAME	ADDRESS
	4111-6 <sup>th</sup> Ave
Jeannette Simonsen	609 78 <sup>th</sup> St 53143
	1020-21 <sup>st</sup> Ave
	4007 7 <sup>th</sup> Av 53140
	" " " "
TIM MAHON	4011-80 <sup>th</sup> St
Traci Gotz	7706 26 <sup>th</sup> Ave
CHAD HEINZELMAN	4103 24 <sup>th</sup> AVE Kenosha

## Kennedy/Pennoyer Park PIM #1.1 Survey Questions Summary

### Exercise 1 (Kennedy)

List 3 things that you like about the park property that should be preserved/enhanced. What makes this area special?

- Large open space; green space (30) for football, soccer, Frisbee, kites
- View of lake (18)
- Is a more inland protected park away from busy traffic
- Underutilized (2)
- Running/walking/bike path (13)
- Lakefront (5)
- Police memorial
- Accessibility Lake access, free access, (9)
- Play areas; large playground (5)
- Not too structured (3)
- Already great sports on the site/area (3)
- Good for skiing/snowshoeing
- Ability to support athletics
- The rocks, climbing on the rocks (3)
- The cove?
- Flat road
- Tall fencing
- Noise absorbing; trees (3)
- Cleanliness
- Low traffic (2)
- Limited night time access
- Keep as much natural landscaping as possible
- Kennedy Drive
- Fireworks
- Scenic drive
- Picnic area (2)
- Bathrooms (2)
- No response (2)

List 3 concerns/issues that you have about the area/site that should be addressed.

- Maintenance (2)
- Parking and traffic; parking upgrade; parking lot is too small and in bad location (29)
- Maintain Kennedy Dr. (6)
- Not developed enough; too much open space, create active uses (playground, ball fields, etc.)(5)
- Under used (7)

- Close the drive (2)
- Bathrooms are not ADA accessible (14)
- No pavilion area for shade/shelter (2)
- Poor road conditions; unsafe and unnecessary (10)
- More access (3)
- Food area; service (2)
- Ways to better accommodate picnickers, grills, shelters (2)
- Wind direct off lake not good
- Flat land that can be built on
- Concerns of unstable ground; sinking in places
- What is the projected usage?
- Maintenance
- Why hasn't it been developed before?
- Reckless driving is damaging grass
- Ice that develops on roadway
- Kennedy Drive traffic (4)
- No beach
- Retaining rocks falling into lake (2)
- Connect the land to the water
- Enhance walking paths; maintain (3)
- No play equipment; enhanced playground (4)
- Lighting (2)
- More natural shade (trees) (3)
- Concerned about structures blocking view
- Don't want paved or cut up; likes open space, is what draws people there; don't overdevelop (5)
- Safety
- Lake view reduced by limestone blocks
- More benches
- Maintain limited nighttime access (2)
- Noise
- Drinking /drugs
- Noise from unwanted gatherings
- Tennis courts need attention
- Proximity to water
- Don't want space eliminated for parking
- Concerned that a dreampark would cause traffic issues and take away too much of open space

### **Exercise 1 (Pennoyer)**

List 3 things that you like about the park property that should be preserved/enhanced. What makes this area special?

- More protected from elements
- Beach area (11)
- Lake views (4)
- Seating for bandshell (2)
- Preserve open space (2)
- Beach area (size) (3)
- Tennis courts (19)
- Open space (for soccer) (3)
- Free access beach (6)
- Fishing access (1)
- Flower gardens
- Walking/running/biking trail (8); enhance
- Presently dormant lake for wading available
- Parking; Logical parking area; good size parking (8)
- Space already available w/o interference
- More protected from elements
- Bandshell (30); but okay if it moves to new location; enhance seating
- Elevated lake view (3)
- Concerts
- Baseball diamonds & Volleyball courts (2)
- Picnic areas (4)
- Natural beauty; trees (2)
- Cleanliness
- Active uses/ busier area
- Limited night time access
- Play area (3)
- Bathrooms (2)
- St. Catherine
- No response (7)
- 

List 3 concerns/ issues that you have about the area/site that should be addressed.

- Add ADA beach access (9)
- Add ADA bathrooms; update (19)
- Don't overcrowd
- noise
- Dirty beach (4)
- Gathering of large groups of people at night (2)
- Repave road; road conditions (2)
- Bathrooms are across a road (2)
- Land is filled w/uneven landscaping; needs grading; grooming & restoration (3)

- Trash/recycling should be addressed (2)
- Ways to better accommodate picnickers, grills, need shelters (3)
- Parking; access; connection of parking areas; more parking (14)
- Pike River outlet dangers
- Traffic (5)
- Flooding; drainage (5)
- Too much traffic w/ young kids (2)
- On flat ground
- Should have concessions (2)
- No buildings
- Improve bike trail in lower areas
- Is underutilized (3)
- Doesn't have a park
- Near home for elderly that could use it
- What are you going to do with all that empty space?
- Picnic area is not nice; cracked pavement (2)
- Seating at bandshell; make bandshell more attractive/updated (2)
- Needs to look less 1960's
- Not a great spot for a tot lot due to visibility, but wonderful for more adult uses
- ADA playground would be ideal here
- More benches
- Maintain limited night time access
- Having regular hours set for road usage
- Drugs/teens
- No lifeguards
- Lake too dangerous to swim in
- Walking path filled with water
- Need more trees
- No response (8)
- 

## **Exercise 2 (Kennedy)**

What is your vision for the park in the future? What improvements should be made in terms of:

### Land Use and Activities (Active use/passive uses)

- Keep as is; open space (9)
- Space needs to be quieter; close to residential
- Build Dream Playground (12)



- Note: no one is against the dream park, just the location of it here; area is too narrow, ground fill is unstable, no parking, backyards.... (2)
- Fitness area/outside fitness circuit (7) for all ages
- Skateboard park
- Open Kennedy Drive
- Removal of roadway (2)
- Expand paved parking
- Don't over do parking
- Improve baseball diamond (3)
- Rugby fields
- Running path; walkways (7)
- Outdated & unsafe playground equip.
- Inclusive accessible playground (14)
- Swimming hole (safe water)
- Dog park area(3)
- Is well used now w/o a lot of expense
- More family oriented –picnic areas (2)
- Flower gardens (3)
- Beautification that brings other cities to see what has been accomplished
- Landscape/shade trees (w/intent to provide bird food all year long) (3)
- Make shore more attractive; clean area by rocks (2)
- Wide expanse of open green space (3)
- Picnic areas expanded, shelters (3)
- Accessible picnic area (5)
- Accessible parking and restrooms (8)
- More access to lake (2)
- Keep as natural as possible, while updating aspects from Exercise #1 (3)
- Concessions; restaurant (3)
- Park upkeep
- Sports facility; better sports section for baseball, maybe buildings for sports like hockey, soccer fields (3)
- Frisbee golf
- More park benches
- Fishing areas, piers (2)
- Bike rentals
- Beach volleyball
- Amphitheater
- Car shows
- Is great for 4<sup>th</sup> of July and is packed
- No response (3)
-

### Opportunities (Spatial relationships? Connectivity?)

- No response (19)
- Safe from multi-lane traffic
- Improve Picnic area (paved), more picnic areas (2)
- Free Wi-Fi
- Pavilions that are rentable and accessible (3)
- Children could play with others regardless of ability; tot lot type activities (5)
- Dog park area
- Dog park by playground could impede many from using due to fears, etc. Kids w/disabilities can act differently – would hate to see someone hurt/ no dog park, waste of lakefront (2)
- Community projects i.e. gardens, art project; children’s programs (4)
- Coordinate functions so both parks can be utilized at once
- Walkways/trails connecting the 2 parks, w/benches, lake walkways, beach access/sitting on the Natural rocks (10)
- Uninhibited use by teenagers
- Market space for activities
- Refreshment stands
- Tranquility space
- Ice skating
- More festivals/ events (2)
- Shaded areas/more trees, more fauna (3)
- More flower/landscape areas
- More lake view seating
- Links nicely
- Good light for night time
- Reroute road
- Preserve the green space; limit construction
- Learning area/fitness
- Winter and summer sports rentals
- Better sports sections for baseball; maybe buildings for sports like hockey, soccer fields
- Maybe wifi use in area
- Streetcar connection to downtown
- Fishing piers
- Used for many large scale activities now
- Keep drive open till 9pm

### Programming

- No response(19)
- Continue to host family events like Kite Fest, car shows, disc golf (15)
- Family reunions

- More usage: festivals, fairs, kids theater etc. (12)
- Therapy (physical, occupational, speech for special needs) (3)
- Football practice areas; baseball fields (4)
- Sports programs for all abilities; more sports, Public exercise; yoga (13)
- Environmental programs (1)
- Beach parties
- Public concerts
- Appropriate portion for dog park
- Dog agility/good citizen competitions
- Space for big events
- A walking/biking, track, ski path (2)
- Native landscaping; flower gardening (3)
- Bird watching areas
- Art fairs
- Keep 4<sup>th</sup> of July
- Markets – organic
- Walking clubs
- Encourage all groups to use and treat w/ respect
- Lakefront bike lanes
- Bike rentals
- Special Olympics events
- Races, major running/biking events (2)
- Keep low development; too narrow of space and close to residential; preserve open space (2)
- Fishing events (2)
- Dancing nights like Chicago's Summer Dance
- Cohorama ??
- Trolley focus
- More at existing bandshell
- Movies in the park
- 4 season activities

## **Exercise 2 ( Pennoyer)**

What is your vision for the park in the future? What improvements should be made in terms of:

### Land Use and Activities (Active use/passive uses)

- Dream park, better location here (9)
- Maintain/Upgrade existing permanent seating at shell (4)
- More concerts in the band shell/summer concert series (9)
- A new amphitheater
- Playgrounds; better equipment; fully accessible (8)
- Exercise circuits for all ages (3)

- Public restrooms for beach goers; improve; make ADA (7)
- Large picnic area, shelters (6)
- Increased pavilion area
- Make like a mini Ravinia
- Harbor reclamation finished
- Improved walking area bike path; walkway w/ view (4)
- Walk out to lake; ADA accessible (2)
- Flower garden; improve landscaping to attract birds (3)
- Grasses to maintain shore (2)
- More park benches; sit and view the lake (2)
- Beach volleyball (3)
- Disc golf
- Wooden boardwalk for access
- Concessions (3)
- Improve the road
- Keep open until 10pm like the other parks
- Should have recreational space
- Maintain properly (2)
- Ice skating
- Pet friendly areas (2)
- Family events
- More fishing areas (3)
- Wine at concerts like Ravinia
- Bike rentals
- Promote winter use at both parks for bird watching
- Beach + Bathroom + playground + St. Catherine commons is a great mix
- Be mindful of water hazard
- No response (9)
- 

*Opportunities (Spatial relationships? Connectivity?)*

- No response (30)
- There is a disconnect at the boundary between the parks, walkways w/ connecting gardens (2)
- Picnic area (paved)
- Free Wi-Fi (2)
- Opportunity for great public swimming, swim classes, people to utilize for family gatherings
- Volleyball tournaments
- Skate/bike rentals
- Connect by land & water (3)
- Fishing piers (2)
- Tobogganing

- More festivals/events (3)
- Shaded areas / walking paths
- ADA accessible beach linked to playground
- Learning area about local fish, wildlife & plant life
- Performance area; partner with local groups- offer youth more opportunities for performance
- More flower/landscaped areas
- Keep 5<sup>th</sup> Ave closed to through traffic to keep gatherings safer
- Bring residents from other counties & states and growing community economy
- Scenic views
- More space for seating; step seating (2)
- Bike trail
- Preserve as much open space as possible

### Programming

- No response (22)
- More music events, car shows, ethnic festivals, dancing (23)
- Outdoor plays (theater)
- More daytime events/music for children
- Fitness circuits; group led exercise (3)
- Safe beach access
- Safe swimming area
- Native landscaping; Flower gardening (3)
- Some fixed low rise seating
- Improve parking after road closure
- Encourage all groups to use and treat with respect
- Bike rentals
- Ice skating area
- Baseball, volleyball, beach volleyball; disc golf (2)
- Snow sledding
- Charging stations for electronic devices
- Wifi for learning stations
- Water sports; jet ski races (2)
- Possible camping for special events
- Already good use of bandshell



PUBLIC INFORMATION MEETING # 1.2  
SIGN-IN SHEET

JOURNEY CHURCH  
FEBRUARY 12, 2014, 6:00 – 7:30 PM

NAME	ADDRESS
Evelyn Pizzala	5303-43 Ave, Kenosha
Roller Pizzala	5303 43rd KENOSHA
Michelle Gullett	9591 42nd Ct, Pl. Pl.
Russell Johnson	19504 104th St Bristol WI
Dayna Bennett	7316 27th Ave Kenosha WI
Mike Lemkus	625 52nd St. (202)653-4147
Jill Mattner	3505 98th Pl. 53158
Kate Beig	7520 35th Ave 53148
Dinny Brydeyn	6427-81 St 53142
Mary Jane Weiss	4052-5 Ave 53142
Patricia Zuchowski	6606 32nd Ave 53142
Linda Johnson	1482 32 Ave Kenosha 53142
Tommy J. Conforti	8547-33rd Ave Kenosha 53142
Eric Hougouard	3818 5th Ave 53140
Chris Weyker	8368 65th Ave 53158
Jackie Battersky	4216-25th St. 53144
Rhonda Bondhok	8308 66th St. Kenosha 53142
Jan Michalski	416-767 St Kenosha
Michael Price	9591 42nd Ct. Pleasant Prairie



PUBLIC INFORMATION MEETING # 1.2  
SIGN-IN SHEET

JOURNEY CHURCH  
FEBRUARY 12, 2014, 6:00 – 7:30 PM

NAME	ADDRESS
Mary ECKHARDT	4103 6 <sup>th</sup> Ave Kenosha WI
Darlene Duncan	8226 57 <sup>th</sup> Ave. Kenosha WI 53144
John BWPASS	4052-5 <sup>th</sup> AVE. Kenosha
Marie Froh	703-16 St. Kenosha 53140
MARK MERRY	5238-38 <sup>th</sup> AVE. 53144
Scott Gordon	5204 46 <sup>th</sup> & 53144
Boyd Fredman	4118 57 <sup>th</sup> St 53144
Jerome Hufendick	2557 LINCOLN Rd
Sheri Reget	11131 44 <sup>th</sup> Ave
Jack Lup	2616 75 <sup>th</sup> St
Covelli	41 <sup>st</sup> St
Weeks, Miranda	6207 7th ave
Dale Howser	2917 Northbridge Dr. Racine 53409
Paul Roman	4631 31 <sup>st</sup> Ave 53142
Erik Bedore	6113 46 <sup>th</sup> Ave Kenosha WI
Dorie Westmeyer	45 4056 5th Ave.
Maggie Hodge	8319 W. Ridge Drive P.P. WI
Kathryn Hellwig	8115 W. Ridge Drive, PP WI

## Kennedy/Pennoyer Park PIM #1.2 Survey Questions Summary

### Exercise 1 (Kennedy)

List 3 things that you like about the park property that should be preserved/enhanced. What makes this area special?

- Open Space/uncrowded/ natural (21)
- Lake View; unobstructed (13)
- Quiet
- Walking path (on rocks) (4)
- Roller coaster road
- Access to lake (3)
- Available bathroom (4)
- Walking/ bike path (6)
- Playground
- Lakeshore Drive (2)
- The festivals (4)
- Picnic areas
- Sidewalks
- Drive
- Trees
- Family park
- Safety
- Neighborhood
- No Response (1)

List 3 concerns/issues that you have about the area/site that should be addressed.

- Parking on Street
- Kennedy Drive is very rough (9)
- Move road away from water – bike walk only
- Speed of traffic on road/traffic (7)
- Dream Park could block views; keep large playground to north or south so open space is not split up (3)
- Lack of dream playground
- Not Accessible bathrooms; need upgrading (8)
- Bathrooms are locked sometimes during summer hours
- Parking lot location/size; needs more (11)
- Bike/ped path should be wide, safe and scenery minimally interrupted w/ crossings (2)
- Lack of place to walk along lake
- Keep some open space
- Improve bathroom



- Better playground (like dream park) (4)
- Lots of rocky area; is unsafe; (2)
- Lake barrier/retainer in poor condition
- Purpose for space
- Don't take lake front park and put in parking (you don't know what you've got until it's gone)
- Flooding in low lying areas
- No comment (2)
- Lighting on path; better lighting (2)
- Greenspace; needs more trees/plantings/beautification- flowers, fountains (3)
- No shade
- Water access
- Lack of use; useless empty space (2)
- Picnic area
- Wind
- Lack of shelter
- Crime
- Pollution/ garbage

### **Exercise 1 (Pennoyer)**

List 3 things that you like about the park property that should be preserved/enhanced. What makes this area special?

- Parking (3)
- Lake View/ natural (5)
- Usable beach (7)
- Bandshell/ music (18)
- Tennis courts (8)
- Less crowded than Simmons
- Seating
- Existing playground
- Public access to lake
- Available bathroom
- Bike/walking path (6)
- Pike Creek access
- Trees/shade (2)
- Water sports
- Picnic area
- No response (4)
-

List 3 concerns/ issues that you have about the area/site that should be addressed.

- No comment (4)
- Bathroom location/ condition – is across road/not ADA accessible (9)
- Bandshell not ADA accessible; no built in seating at bandshell (3)
- More seating at events
- Current of water/safety issues
- Not safe
- Unleveled ground/soil
- Drainage/flooding (5)
- Street is too busy (2)
- Very north for PP & IL res. Use & draw to downtown
- Smaller, usable flat green space
- Layout of ?? pass
- Beach sees no traffic
- Beach access (6)
- Dirty beach area (2)
- More water/beach sports activities
- Crowded in summer
- Old bandshell is unattractive; sound system inadequate (2)
- Condition of Kennedy Drive (4)
- Lighting on path
- Improve walk path
- Upkeep of tennis courts
- Quality of path
- Rentals for activities (bike/boats)
- Separate area for dogs
- Lack of use (2)
- Loitering of teens/ young adults (2)
- noise
- Lack of shelter
- Shade
- No bike lock up area
- Parking

## Exercise 2 (Kennedy)

What is your vision for the park in the future? What improvements should be made in terms of:

### Land Use and Activities (Active use/passive uses)

- No response (1)
- Keep as is; open lake front is rare – everything doesn't need to be developed; quiet area (6)
- Festivals (4)
- Sports events (5)
- Biking, strolling, walking dog; bike trail; ADA path (8)
- Take kid to play
- Climb, sit on the rocks
- Love special needs playground; refurbish playground (9)
- Better road/Kennedy Dr.; traffic flow through neighborhood (4)
- Nice wide walkway by park
- Kenosha Dream Playground (6)
- ADA bathroom; improve bathrooms (9)
- Better landscape; trees (2)
- Improved parking (3)
- Increase access to lake (2)
- Shelters; shade (3)
- Picnic area/tables (3)
- Food Vendors; rentals (3)
- Better lighting
- More common area
- Sports; baseball/football fields
- Fibar/recycled tires
- KOPP

### Opportunities (Spatial relationships? Connectivity?)

- No Response (13)
- Dream Playground Project
- Keep space open for the most flexible use; sports (3)
- Accessible bathroom
- Rental Pavilion
- Continuous bike/walking path preferably along lake; Lake Michigan water trail; boardwalk; connect Simmons, Kennedy & Pennoyer (6)
- Includes more of the city by location
- Better access to lake (3)
- Expanded beach

- Future learning site; social skills
- Special Olympics (2)
- Two lanes for traffic
- Fire pits/area
- Putting greens
- Should have sports, music together
- Quiet area
- Restaurant overlooking the lake (2)
- Recycling program
- Community events
- 

### Programming

- No Response (11)
- Disc golf course
- Beach volleyball; tournaments (3)
- Auto shows, kite festival; family festivals (9)
- Waterfront access/paths (2)
- Park teachers for children during summer
- Children's activities, sensory garden, serenity garden
- Water foundation
- Game courts
- Art activities; art fair (2)
- Organized sports; tournaments; youth sports (4)
- Open festival space; accessible fields to be used in a variety of ways (4)
- Restrict parking through park – security
- Close access to beach
- Bike rentals (2)
- 

### **Exercise 2 ( Pennoyer)**

What is your vision for the park in the future? What improvements should be made in terms of:

#### Land Use and Activities (Active use/passive uses)

- Place dream park here (3) (please think seriously about putting the dream park here; no other accessible playground also offers an accessible beach)
- Accessible playground for all
- Add more parking (3)
- New seating options; built in seating (4)
- Showers for sand removal

- Beach – not just for swimming; ADA beach (6)
- Continuous bike/ped path; ADA accessible path (7)
- Better bandshell; modernize (2)
- More use of bandshell (3)
- Shading; naturalized (2)
- Repair path
- Repair roadway
- Relocate bathroom; improve and maintain restrooms (9)
- Limited tent camping
- Refurbish playground
- Family play spaces
- Picnics
- Shade/shelter (2)
- Volleyball; beach volleyball (3)
- Food vendors; rentals (3)
- Water Sports
- Grade; fix flood area (2)
- Lighting
- Fishing activities
- Access to water (2)
- Areas for sitting
- Dog park (2)
- Roller skating track
- No Response (2)

*Opportunities (Spatial relationships? Connectivity?)*

- No response (18)
- Sledding
- Disc Golf
- Fitness Trail
- Pet area
- Connect parks (2)
- Connect 7<sup>th</sup> ave walk to park perhaps at center
- Keep public access to lake
- Move bathroom
- Waterfront access w/ path along lake
- Trail connecting Simmons, Kennedy & Pennoyer
- DNR,NPS/Boy/Lake planning
- Garden (3)
- Natural dunes
- Nature preserve

- Expand beach/water access
- Playground
- 

### Programming

- No response (15)
- Beach volleyball would be fun; volleyball tournament (5)
- More public activity; family festivals, car show (8)
- More use of bandshell (3)
- Waterfront access/paths (2)
- Natural tours – like a ranger in a national park
- Music
- Fitness competitions
- Yoga area
- Restrict driving through the park-security
- Concessions
- Restaurant
- Amusement park
- More seating areas

Landscape  
Architects  
Planners  
Engineers

**PIM #2.1 Sign-In**  
**Kenosha Public Museum**  
Kenosha, WI  
April 8, 6:00-7:30 PM

Tammy J Comforti  
Jennifer Tiernan  
Kathleen  
Cassandra Poise  
Susan Heinisch  
Thomas Heinisch  
Kim Leipzig  
Linda Johnson  
Lorraine Hollingsworth  
John & Mary Jane Weiss  
Gary & Sue Wreck  
EO: LYNOA BURMAN  
SCOTT Gordon  
MARK MOODY  
Mike Lemch  
Will Jaggott  
Linda Meis  
Jeff Meis  
Karen & Don Heidamus

define  
enhance  
sustain

Landscape  
Architects  
Planners  
Engineers

**PIM #2.1 Sign-In**  
**Kenosha Public Museum**  
Kenosha, WI  
April 8, 6:00-7:30 PM

Mary Eckhardt  
Chris Eckhardt  
Dicky Baldwin  
Grace Kalakowski  
Bruce Pyhonen  
Chris Weyer  
Patrick Zuchowski  
Jill Mattner  
Jaime Forsythe  
Elizabeth Corvelli  
Karen Olufs Kolufs @ societys Assets.org  
George Lynch  
Ginny Byrdger

define  
enhance  
sustain



Landscape  
Architects  
Planners  
Engineers

**PIM #2.1 Sign-In**  
**Kenosha Public Museum**  
Kenosha, WI  
April 8, 6:00-7:30 PM

Richard Kinch

Kurt Wicklund

Donna Tierman

Dave Paff

William De Jesus

Jerome Hufendick

David Wood

Steve Mitchell

Casey Michener

Pat Shumaker

define  
enhance  
sustain

Landscape  
Architects  
Planners  
Engineers

**Kennedy/Pennoyer Park Public Information Meeting #2.1  
Kenosha Public Museum  
Kenosha, WI**

**4-8-14  
Agenda**

- 6:00 pm – Doors open, Welcome and Introductions
- 6:05 pm – Recap of PIM #1 Findings and Design Program
- 6:30 pm – Presentation of Preliminary Concepts
- 7:15 pm – Wrap Up/Questions
- 7:30 pm – Adjourn

**Comments:**

A dreadful room for a meeting - like meeting in a cave.

Originally I wondered why it was necessary to redesign these very nice parts. I am now less skeptical. Both A & B concepts seem useful and attractive. (It does seem that both privilege rugby.)

I have a personal preference for natural landscaping & native plantings. I guess I don't think of these lakefront parks as game or athletic venues, primarily.

define  
enhance  
sustain



Landscape Architects Planners Engineers

Kennedy/Pennoyer Park Public Information Meeting #2.1 Kenosha Public Museum Kenosha, WI

4-8-14 Agenda

- 6:00 pm - Doors open, Welcome and Introductions
6:05 pm - Recap of PIM #1 Findings and Design Program
6:30 pm - Presentation of Preliminary Concepts
7:15 pm - Wrap Up/Questions
7:30 pm - Adjourn

Comments:

Handwritten note: Kennedy Concept B is a non-starter. Eats green space, less parking, more expensive & more against it.

Handwritten note: The rest, overall, looks very good. Good incorporation of the Feb feedback.

define enhance sustain



Landscape  
Architects  
Planners  
Engineers

**Kennedy/Pennoyer Park Public Information Meeting #2.1**  
**Kenosha Public Museum**  
**Kenosha, WI**

**4-8-14**  
**Agenda**

- 6:00 pm – Doors open, Welcome and Introductions
- 6:05 pm – Recap of PIM #1 Findings and Design Program
- 6:30 pm – Presentation of Preliminary Concepts
- 7:15 pm – Wrap Up/Questions
- 7:30 pm – Adjourn

**Comments:**

*walkway elevated slightly to be able to look over rocks.*

*A continuous drive for those who can't walk/bike.*

define  
enhance  
sustain

Landscape  
Architects  
Planners  
Engineers

**Kennedy/Pennoyer Park Public Information Meeting #2.1  
Kenosha Public Museum  
Kenosha, WI**

**4-8-14  
Agenda**

- 6:00 pm – Doors open, Welcome and Introductions
- 6:05 pm – Recap of PIM #1 Findings and Design Program
- 6:30 pm – Presentation of Preliminary Concepts
- 7:15 pm – Wrap Up/Questions
- 7:30 pm – Adjourn

**Comments:**

- 1. LIKE KENNEDY A Better WITH BRIDGE to dunes IN Pennoyer
- 2. INSIDE DRIFTHAM PARK IN Pennoyer PARK
- 3. LIKE THE BIKE PATH concept IN Kennedy PLAN A
- 4. PLAN A Kennedy - south PARKING lot too BIG, need AREA for people VIEWING

define  
enhance  
sustain

Landscape  
Architects  
Planners  
Engineers

**Kennedy/Pennoyer Park Public Information Meeting #2.1  
Kenosha Public Museum  
Kenosha, WI**

**4-8-14  
Agenda**

- 6:00 pm – Doors open, Welcome and Introductions
- 6:05 pm – Recap of PIM #1 Findings and Design Program
- 6:30 pm – Presentation of Preliminary Concepts
- 7:15 pm – Wrap Up/Questions
- 7:30 pm – Adjourn

**Comments:**

Concept B has a road that  
dividing the Park into two regions.  
People will most likely traverse  
that road when walking  
through the green space, which  
presents a potential conflict with  
cars & other vehicles.

define  
enhance  
sustain

Landscape  
Architects  
Planners  
Engineers

**Kennedy/Pennoyer Park Public Information Meeting #2.1  
Kenosha Public Museum  
Kenosha, WI**

**4-8-14  
Agenda**

- 6:00 pm – Doors open, Welcome and Introductions
- 6:05 pm – Recap of PIM #1 Findings and Design Program
- 6:30 pm – Presentation of Preliminary Concepts
- 7:15 pm – Wrap Up/Questions
- 7:30 pm – Adjourn

**Comments:**

*Concept A Kennedy*

*Concept A Pennoyer w/bridge from  
Concept B Pennoyer*

define  
enhance  
sustain

Landscape  
Architects  
Planners  
Engineers

**Kennedy/Pennoyer Park Public Information Meeting #2.1  
Kenosha Public Museum  
Kenosha, WI**

**4-8-14  
Agenda**

- 6:00 pm – Doors open, Welcome and Introductions
- 6:05 pm – Recap of PIM #1 Findings and Design Program
- 6:30 pm – Presentation of Preliminary Concepts
- 7:15 pm – Wrap Up/Questions
- 7:30 pm – Adjourn

**Comments:**

I like Concept A for Kennedy. The split of the pedestrians and wheel riders is a great idea. I also like in Concept B the bringing out the edge of the water.

define  
enhance  
sustain



Landscape  
Architects  
Planners  
Engineers

**Kennedy/Pennoyer Park Public Information Meeting #2.1  
Kenosha Public Museum  
Kenosha, WI**

**4-8-14  
Agenda**

- 6:00 pm – Doors open, Welcome and Introductions
- 6:05 pm – Recap of PIM #1 Findings and Design Program
- 6:30 pm – Presentation of Preliminary Concepts
- 7:15 pm – Wrap Up/Questions
- 7:30 pm – Adjourn

**Comments:**

CONCEPT A KENNEDY  
& CONCEPT A PENNOYER  
are fabulous!  
Thank you!!  
The children & special  
needs of Kenosha  
THANK you!!

define  
enhance  
sustain

Landscape  
Architects  
Planners  
Engineers

**Kennedy/Pennoyer Park Public Information Meeting #2.1  
Kenosha Public Museum  
Kenosha, WI**

**4-8-14  
Agenda**

- 6:00 pm – Doors open, Welcome and Introductions
- 6:05 pm – Recap of PIM #1 Findings and Design Program
- 6:30 pm – Presentation of Preliminary Concepts
- 7:15 pm – Wrap Up/Questions
- 7:30 pm – Adjourn

**Comments:**

Washington Road as a main entrance seems problematic by Washington middle school. You are creating a main road loop which will just create more crime. ~~You need to~~ I don't like traffic flow in plan A or B. Keep the road open.

define  
enhance  
sustain



DESIGN GROUP

Landscape Architects  
Planners  
Engineers

**Kennedy/Pennoyer Park Public Information Meeting #2.1**  
**Kenosha Public Museum**  
**Kenosha, WI**

**4-8-14**  
**Agenda**

- 6:00 pm – Doors open, Welcome and Introductions
- 6:05 pm – Recap of PIM #1 Findings and Design Program
- 6:30 pm – Presentation of Preliminary Concepts
- 7:15 pm – Wrap Up/Questions
- 7:30 pm – Adjourn

**Comments:**

Kennedy Park - North & South parking lots are a great idea. The center parking lot is not. Children play in the neighborhood. That road <sup>could hurt someone</sup> you propose would cause too much traffic, noise, crime & <sup>no</sup> views. Keep the Kennedy Park road. Fix up existing park repair road, upgrade bathrooms, this would save taxpayers money, also ~~it~~ it would preserve the Kenosha history. Keep the Kennedy road - if how quite well. Place dream children park where the proposed soccer field north of the tennis courts in Pennoyer. Better access for all ages. Also no benches for Pennoyer. Too hard. Nothing to rest you backbone. No good for senior citizens. Why fix something that works?

define  
enhance  
sustain



DESIGN GROUP

Landscape Architects  
Planners  
Engineers

Kennedy/Pennoyer Park Public Information Meeting #2.1  
Kenosha Public Museum  
Kenosha, WI

4-8-14  
Agenda

- 6:00 pm – Doors open, Welcome and Introductions
- 6:05 pm – Recap of PIM #1 Findings and Design Program
- 6:30 pm – Presentation of Preliminary Concepts
- 7:15 pm – Wrap Up/Questions
- 7:30 pm – Adjourn

Comments:

Like = removal of Road & replace bike path + walk way

Ken plan (A) - like parking in 3 areas  
plan (A) - like playground placement

Pen (A) Love - formal seating for Bandshell  
(B) Love - bike path over river

Dislike

Ken (B) Don't like road. Don't like parking - need more.  
Don't like single pathway.

Pen (B) Don't like setting for bandshell as well as plan (A)

define  
enhance  
sustain



DESIGN GROUP

Landscape Architects Planners Engineers

Kennedy/Pennoyer Park Public Information Meeting #2.1 Kenosha Public Museum Kenosha, WI

4-8-14 Agenda

- 6:00 pm - Doors open, Welcome and Introductions
6:05 pm - Recap of PIM #1 Findings and Design Program
6:30 pm - Presentation of Preliminary Concepts
7:15 pm - Wrap Up/Questions
7:30 pm - Adjourn

Comments:

I am for Concept A but I would like the bridge over the river to open up that area

define enhance sustain

DP

Landscape  
Architects  
Planners  
Engineers

**Kennedy/Pennoyer Park Public Information Meeting #2.1**  
**Kenosha Public Museum**  
**Kenosha, WI**

**4-8-14**  
**Agenda**

- 6:00 pm – Doors open, Welcome and Introductions
- 6:05 pm – Recap of PIM #1 Findings and Design Program
- 6:30 pm – Presentation of Preliminary Concepts
- 7:15 pm – Wrap Up/Questions
- 7:30 pm – Adjourn

**Comments:**

- Concept A is nice - I don't like Concept B's idea of splitting Kennedy Park with a drive.
- I think keeping or providing for a "Central Park" concept for Kennedy Park would be good.
- Though the idea of lighting the walkway was shunned by Blake, I think the walkway would provide a very nice promenade feeling if it were lit.
- Honestly, Any improvement to Kennedy/Pennoyer Park will be good for the area.
- Yes, to the bridge over Pike River with the idea of future development on the North side of the RIVER.
- Install AED and A security phone at the dream playground like you'd have on UWP campus for safety sake.

define  
enhance  
sustain

Landscape  
Architects  
Planners  
Engineers

**Kennedy/Pennoyer Park Public Information Meeting #2.1  
Kenosha Public Museum  
Kenosha, WI**

**4-8-14  
Agenda**

- 6:00 pm – Doors open, Welcome and Introductions
- 6:05 pm – Recap of PIM #1 Findings and Design Program
- 6:30 pm – Presentation of Preliminary Concepts
- 7:15 pm – Wrap Up/Questions
- 7:30 pm – Adjourn

**Comments:**

*Kennedy Park I prefer Plan B - BUT The  
Best would be Pennoyer Park either A or B  
Please leave Kennedy Drive on foot - Repave it*

---

---

---

---

---

---

---

---

---

---

define  
enhance  
sustain

Landscape  
Architects  
Planners  
Engineers

**Kennedy/Pennoyer Park Public Information Meeting #2.1  
Kenosha Public Museum  
Kenosha, WI**

**4-8-14  
Agenda**

- 6:00 pm – Doors open, Welcome and Introductions
- 6:05 pm – Recap of PIM #1 Findings and Design Program
- 6:30 pm – Presentation of Preliminary Concepts
- 7:15 pm – Wrap Up/Questions
- 7:30 pm – Adjourn

**Comments:**

*Pennoyer Park makes more sense.*

*Kennedy - both projections violate the park*

*Pennoyer has water access to woods in etc.*

*Leave Kennedy direct intake - if it*

define  
enhance  
sustain



Landscape  
Architects  
Planners  
Engineers

**Kennedy/Pennoyer Park Public Information Meeting #2.1  
Kenosha Public Museum  
Kenosha, WI**

**4-8-14  
Agenda**

- 6:00 pm – Doors open, Welcome and Introductions
- 6:05 pm – Recap of PIM #1 Findings and Design Program
- 6:30 pm – Presentation of Preliminary Concepts
- 7:15 pm – Wrap Up/Questions
- 7:30 pm – Adjourn

**Comments:**

*In Concept A, 95 stalls at the south parking lot will spoil the look-out that is used night & day by out of state visitors. Also, I love it that corner – you can't believe the sinkage of that land. We have had land problems there for 30 years = sinkage in different areas. You need to check the land soon before any viable plans.*

define  
enhance  
sustain

Landscape  
Architects  
Planners  
Engineers

**Kennedy/Pennoyer Park Public Information Meeting #2.1  
Kenosha Public Museum  
Kenosha, WI**

**4-8-14  
Agenda**

- 6:00 pm – Doors open, Welcome and Introductions
- 6:05 pm – Recap of PIM #1 Findings and Design Program
- 6:30 pm – Presentation of Preliminary Concepts
- 7:15 pm – Wrap Up/Questions
- 7:30 pm – Adjourn

**Comments:**

Move playground to athletic field 2  
on Pennoyer  
Add Bridge 9 on B to A  
If you HAVE to put playground in  
Kennedy - move it to Athletic field 2  
~~to~~

define  
enhance  
sustain

**Kennedy/Pennoyer Park Public Information Meeting #2.1  
Kenosha Public Museum  
Kenosha, WI**

**4-8-14  
Agenda**

- 6:00 pm – Doors open, Welcome and Introductions
- 6:05 pm – Recap of PIM #1 Findings and Design Program
- 6:30 pm – Presentation of Preliminary Concepts
- 7:15 pm – Wrap Up/Questions
- 7:30 pm – Adjourn

**Comments:**

Neither. Try a concept  
where it doesn't cut  
through the park, doesn't  
disturb the neighborhood  
in any way, & the dream  
playground is actually  
moved in a different location.  
Don't forget about the "burnouts"  
hanging in the parking lot.

Landscape  
Architects  
Planners  
Engineers

**Kennedy/Pennoyer Park Public Information Meeting #2.1  
Kenosha Public Museum  
Kenosha, WI**

**4-8-14  
Agenda**

- 6:00 pm – Doors open, Welcome and Introductions
- 6:05 pm – Recap of PIM #1 Findings and Design Program
- 6:30 pm – Presentation of Preliminary Concepts
- 7:15 pm – Wrap Up/Questions
- 7:30 pm – Adjourn

**Comments:**

Preference for Concept A for Kennedy -

Pennoyer - Need Bridge. (keep it)  
match the natural beach with natural  
birdshell seating or more formal with  
more formal. No preference for one  
over the other.

Add look outs on North + South to  
Concept A.

Kennedy

Reduce parking spots in Kennedy Center A parking

define  
enhance  
sustain

Landscape  
Architects  
Planners  
Engineers

**Kennedy/Pennoyer Park Public Information Meeting #2.1  
Kenosha Public Museum  
Kenosha, WI**

**4-8-14  
Agenda**

- 6:00 pm – Doors open, Welcome and Introductions
- 6:05 pm – Recap of PIM #1 Findings and Design Program
- 6:30 pm – Presentation of Preliminary Concepts
- 7:15 pm – Wrap Up/Questions
- 7:30 pm – Adjourn

**Comments:**

Concept - A with the Pike  
bridge from Concept B  
Bike idea from Eric Haagard linking

define  
enhance  
sustain



DESIGN GROUP

Landscape Architects  
Planners  
Engineers

**Kennedy/Pennoyer Park Public Information Meeting #2.1**  
**Kenosha Public Museum**  
**Kenosha, WI**

**4-8-14**  
**Agenda**

- 6:00 pm – Doors open, Welcome and Introductions
- 6:05 pm – Recap of PIM #1 Findings and Design Program
- 6:30 pm – Presentation of Preliminary Concepts
- 7:15 pm – Wrap Up/Questions
- 7:30 pm – Adjourn

**Comments:**

CONCEPT B "PENNOYER" BRIDGE ACROSS RIVER TO UNUSED AREA  
NORTH OF RIVER GREAT IDEA. WE'LL UTILIZE MORE LAKEFRONT.  
HOW ABOUT A PARKING LOT ON NORTH SIDE OF RIVER?  
ACCESS FROM ALFORD DRIVE:  
DONT LIKE IDEA OF ELIMINATING KENNEDY DRIVE - PLAN "B" AT LEAST  
HAS SOME OF IT LEFT.

STEVE MITCHELL  
945-4639

define  
enhance  
sustain



Landscape  
Architects  
Planners  
Engineers

**Kennedy/Pennoyer Park Public Information Meeting #2.1**  
**Kenosha Public Museum**  
**Kenosha, WI**

**4-8-14**  
**Agenda**

- 6:00 pm – Doors open, Welcome and Introductions
- 6:05 pm – Recap of PIM #1 Findings and Design Program
- 6:30 pm – Presentation of Preliminary Concepts
- 7:15 pm – Wrap Up/Questions
- 7:30 pm – Adjourn

**Comments:**

---

*I like Concept B @ Kennedy*

---



---



---



---



---



---



---



---



---



---

define  
enhance  
sustain



Landscape Architects  
Planners  
Engineers

Kennedy/Pennoyer Park Public Information Meeting #2.1  
Kenosha Public Museum  
Kenosha, WI

4-8-14  
Agenda

- 6:00 pm – Doors open, Welcome and Introductions
- 6:05 pm – Recap of PIM #1 Findings and Design Program
- 6:30 pm – Presentation of Preliminary Concepts
- 7:15 pm – Wrap Up/Questions
- 7:30 pm – Adjourn

Comments:

Neither plan. Kennedy is too divided by either parking or smaller Kennedy Dr. Large parking lot at end of Washington Rd or need Kennedy drive, are disruptive to neighborhood. Kennedy drive should open.

If one plan for Kennedy - Plan B if the drive through is gated at both ends. Dream playground best in Pennoyer! But, why are we planning this whole concept around the Dream playground.

define  
enhance  
sustain



Landscape  
Architects  
Planners  
Engineers

**Kennedy/Pennoyer Park Public Information Meeting #2.1  
Kenosha Public Museum  
Kenosha, WI**

**4-8-14  
Agenda**

- 6:00 pm – Doors open, Welcome and Introductions
- 6:05 pm – Recap of PIM #1 Findings and Design Program
- 6:30 pm – Presentation of Preliminary Concepts
- 7:15 pm – Wrap Up/Questions
- 7:30 pm – Adjourn

**Comments:**

Concept B for both - if road  
at Washington + 44<sup>st</sup> is gated  
after hours

Why are we changing the  
world for a handicapt  
playground that is supposed  
to be only 3 city lots big!!!

define  
enhance  
sustain

Landscape  
Architects  
Planners  
Engineers

**Kennedy/Pennoyer Park Public Information Meeting #2.1  
Kenosha Public Museum  
Kenosha, WI**

**4-8-14  
Agenda**

- 6:00 pm – Doors open, Welcome and Introductions
- 6:05 pm – Recap of PIM #1 Findings and Design Program
- 6:30 pm – Presentation of Preliminary Concepts
- 7:15 pm – Wrap Up/Questions
- 7:30 pm – Adjourn

**Comments:**

Concept A – Great parking options  
Concept A – Nice green space options  
Concepts in Pennoyer Soccer field is great option  
Concept B – Kennedy – Not in favor of road going  
thru the park  
Concept A – Would like to add a separate  
open air pavilion  
Add Bridge to Pennoyer (both)  
Ensure that all paths are connected to all areas!

define  
enhance  
sustain

Landscape  
Architects  
Planners  
Engineers

**Kennedy/Pennoyer Park Public Information Meeting #2.1**  
**Kenosha Public Museum**  
**Kenosha, WI**

**4-8-14**  
**Agenda**

- 6:00 pm – Doors open, Welcome and Introductions
- 6:05 pm – Recap of PIM #1 Findings and Design Program
- 6:30 pm – Presentation of Preliminary Concepts
- 7:15 pm – Wrap Up/Questions
- 7:30 pm – Adjourn

**Comments:**

Have the bridge in final decision;  
if lakeshore drive connects to Washington Rd,  
put in a 4 way stop; if parking lot is  
is at end of Washington Rd, put in a  
4 way stop

Personally - don't care for either  
location ... How about Pet's?  
the weather is better west, not east....

define  
enhance  
sustain

Landscape  
Architects  
Planners  
Engineers

**Kennedy/Pennoyer Park Public Information Meeting #2.1  
Kenosha Public Museum  
Kenosha, WI**

**4-8-14  
Agenda**

- 6:00 pm – Doors open, Welcome and Introductions
- 6:05 pm – Recap of PIM #1 Findings and Design Program
- 6:30 pm – Presentation of Preliminary Concepts
- 7:15 pm – Wrap Up/Questions
- 7:30 pm – Adjourn

**Comments:**

Kennedy B seems more Agreeable  
- Less parking = more park  
Pennoyer B ALSO seems better  
- Less parking = more green space  
I Like the Fields For Ball Play  
there may be a time when city  
will allow Pennoyer to be considered  
for the Large Playground. - could  
be a nice fit for lots of people.  
Thank you.

define  
enhance  
sustain

Landscape  
Architects  
Planners  
Engineers

**Kennedy/Pennoyer Park Public Information Meeting #2.1  
Kenosha Public Museum  
Kenosha, WI**

**4-8-14  
Agenda**

- 6:00 pm – Doors open, Welcome and Introductions
- 6:05 pm – Recap of PIM #1 Findings and Design Program
- 6:30 pm – Presentation of Preliminary Concepts
- 7:15 pm – Wrap Up/Questions
- 7:30 pm – Adjourn

**Comments:**

- THE ATHLETIC FIELD #2 @  
Pennoyer Park could be used as  
an ICE RINK IN WINTER MONTHS.
- DO NOT dissect the park with  
a road.
- Reduce the size of Parking lot #3 Kenosha  
(the center lot) maintain high number  
of Handicap accessible spots.

define  
enhance  
sustain



DESIGN GROUP

Landscape Architects Planners Engineers

Kennedy/Pennoyer Park Public Information Meeting #2.1 Kenosha Public Museum Kenosha, WI

4-8-14 Agenda

- 6:00 pm - Doors open, Welcome and Introductions
6:05 pm - Recap of PIM #1 Findings and Design Program
6:30 pm - Presentation of Preliminary Concepts
7:15 pm - Wrap Up/Questions
7:30 pm - Adjourn

Comments:

KENNEDY CONCEPT A VERY GOOD EXCEPT TOO LARGE PARKING LOT AT SOUTHY END.

define enhance sustain

Landscape  
Architects  
Planners  
Engineers

**Kennedy/Pennoyer Park Public Information Meeting #2.1**  
**Kenosha Public Museum**  
**Kenosha, WI**

**4-8-14**  
**Agenda**

- 6:00 pm – Doors open, Welcome and Introductions
- 6:05 pm – Recap of PIM #1 Findings and Design Program
- 6:30 pm – Presentation of Preliminary Concepts
- 7:15 pm – Wrap Up/Questions
- 7:30 pm – Adjourn

**Comments:**

---

Concerns about Washington Rd access  
for both A+B Kennedy concepts. Its  
runs through a residential area, its narrow  
A lot of children in neighborhood, congestion  
from Washington Middle School. Plan B  
creates a big loop which could generate  
heavy traffic. Would like to keep  
Kennedy Drive open. It is a Kenosha landmark

---

define  
enhance  
sustain

Landscape  
Architects  
Planners  
Engineers

**Kennedy/Pennoyer Park Public Information Meeting #2.1  
Kenosha Public Museum  
Kenosha, WI**

**4-8-14  
Agenda**

- 6:00 pm – Doors open, Welcome and Introductions
- 6:05 pm – Recap of PIM #1 Findings and Design Program
- 6:30 pm – Presentation of Preliminary Concepts
- 7:15 pm – Wrap Up/Questions
- 7:30 pm – Adjourn

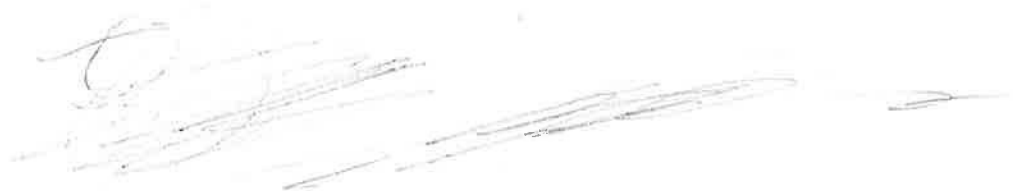
**Comments:**

Love Kennedy A Concept. - Great parking options on both ends and in the middle. Plenty of green space and there will be much enjoyment of the paths rather than the road.

Love Pennoyer A → parking to connect both parks is great - Add bridge over Pike river from plan B.

define  
enhance  
sustain





Landscape  
Architects  
Planners  
Engineers

**Kennedy/Pennoyer Park Public Information Meeting #2.1  
Kenosha Public Museum  
Kenosha, WI**

**4-8-14  
Agenda**

- 6:00 pm – Doors open, Welcome and Introductions
- 6:05 pm – Recap of PIM #1 Findings and Design Program
- 6:30 pm – Presentation of Preliminary Concepts
- 7:15 pm – Wrap Up/Questions
- 7:30 pm – Adjourn

**Comments:**

Use Concept A for Kennedy  
Merge with B for Pennoyer  
add Bridge and Amphitheater  
seating

define  
enhance  
sustain

Landscape  
Architects  
Planners  
Engineers

**Kennedy/Pennoyer Park Public Information Meeting #2.1**  
**Kenosha Public Museum**  
**Kenosha, WI**

**4-8-14**  
**Agenda**

- 6:00 pm – Doors open, Welcome and Introductions
- 6:05 pm – Recap of PIM #1 Findings and Design Program
- 6:30 pm – Presentation of Preliminary Concepts
- 7:15 pm – Wrap Up/Questions
- 7:30 pm – Adjourn

**Comments:**

---

CONCEPT A FOR KENNEDY THE  
PARKING IN THE PLAN IS NEEDED.

---

CONCEPT A FOR PENNOYER PLUS  
AOD BRIDGE OVER RIVER.

---

---

---

---

---

define  
enhance  
sustain

Landscape  
Architects  
Planners  
Engineers

**Kennedy/Pennoyer Park Public Information Meeting #2.1  
Kenosha Public Museum  
Kenosha, WI**

**4-8-14  
Agenda**

6:00 pm – Doors open, Welcome and Introductions

6:05 pm – Recap of PIM #1 Findings and Design Program

6:30 pm – Presentation of Preliminary Concepts

7:15 pm – Wrap Up/Questions

7:30 pm – Adjourn

Comments: *I prefer both B concepts -  
I don't like the larger parking concepts.*

---

---

---

---

---

---

---

---

---

---

define  
enhance  
sustain



DESIGN GROUP

Landscape Architects  
Planners  
Engineers

Kennedy/Pennoyer Park Public Information Meeting #2.1  
Kenosha Public Museum  
Kenosha, WI

4-8-14  
Agenda

- 6:00 pm – Doors open, Welcome and Introductions
- 6:05 pm – Recap of PIM #1 Findings and Design Program
- 6:30 pm – Presentation of Preliminary Concepts
- 7:15 pm – Wrap Up/Questions
- 7:30 pm – Adjourn

Comments:

Plan A has better features that are better for the neighborhood. There are 2 many parking spaces too close to the residences. The Plan B drive would create a scoop the loop situation that would be detrimental to the safety of the residences & the detriment of the 5th Ave traffic. Neither concept is fully acceptable. Kennedy should be left as open space. I like changing the bike path so it doesn't cross roads! This is a good idea for safety reasons. Please don't line the lakefront with trees - this cuts down the view for everyone using the bike path & the whole expanse of Kennedy. Kennedy should be left open green space. Please consider Pennoyer for the playground. It makes much more common sense, also financial sense. We need green space & not less of it. Green space creates well-being. Also please consider the impact of all you

define  
enhance  
sustain

propose for the residents who live in the neighborhood. We ride our bikes down 5th Av & the proposed new amt. of parking will put the bikers who cross Wash. Rd. in jeopardy. The spaces there now can not see someone coming down the hill to cross Wash Rd. More parking, greater jeopardy.

The Dream Playground is a wonderful concept that would be better served by placing it where it is more visible, better access from the buses, more access for seniors. rather than design Kennedy to accomodate it. Please use common sense. Looking closer at B - it is not acceptable at all.

Landscape  
Architects  
Planners  
Engineers

**Kennedy/Pennoyer Park Public Information Meeting #2.1  
Kenosha Public Museum  
Kenosha, WI**

**4-8-14  
Agenda**

- 6:00 pm – Doors open, Welcome and Introductions
- 6:05 pm – Recap of PIM #1 Findings and Design Program
- 6:30 pm – Presentation of Preliminary Concepts
- 7:15 pm – Wrap Up/Questions
- 7:30 pm – Adjourn

**Comments:**

*Kennedy  
Park*

*Concept A Kennedy - cuts the park in half Limits flexibility of use for kite flight, 4th of July*

*Both plans are contradictory to the top 3 design goals you stated:  
- Improve Traffic Issue - Maintain Views - Flexible Space*

*Keep Kennedy Drive open. If you close it, you will push traffic to Fifth Avenue.*

*Please don't further block views with trees.*

*Like the open aspect of Kennedy Park. Keep it open.*

*Why are we designing all of Kennedy Park to accommodate the Playground.*

*Why wasn't there a design concept showing the playground at the south end of Kennedy where the wedge for h20 was told it would be?*

define  
enhance  
sustain

Friends of Kennedy Park is a neighborhood association of 100 people who live around KP & PP. We believe Penroyer Park could be a better location for The Playground

A design goal was to expand intergenerational interaction. There is a Senior Community across the street from Penroyer Park. They welcome the Playground.

This is an accessible playground. It should be accessible to everyone - public transportation goes right to Penroyer Park. This playground  
People from across the city can get right to it at Penroyer

Streets are <sup>not</sup> designed to re-route buses through neighborhoods.

Landscape  
Architects  
Planners  
Engineers

PIM #2.2 Sign-In  
Journey Church  
Kenosha, WI  
April 9, 6:00-7:30 PM

Curt & Ann Wilson

Donald Shepard

Dayna Burnett

Jeff Wamboldt

Wendy Forsythe

Kate Berg

Tommy J Longferts

Jaine Forsythe

Scott Gordon

Lance Gordon

Pat Zuchowski

Michelle Gullett

James Hall

Paul Czada

22 Total Attendees

some did not sign in

define  
enhance  
sustain



Landscape  
Architects  
Planners  
Engineers

**Kennedy/Pennoyer Park Public Information Meeting #2.2**  
Journey Church  
Kenosha, WI

**4-9-14  
Agenda**

- 6:00 pm – Doors open, Welcome and Introductions
- 6:05 pm – Recap of PIM #1 Findings and Design Program
- 6:30 pm – Presentation of Preliminary Concepts
- 7:15 pm – Wrap Up/Questions
- 7:30 pm – Adjourn

**Comments:**

I like concepts A more - but some features of concepts B.

• I like the more formal amphitheater

• I like the continuation of the split walk ~~like~~ paths

• I like parking lots better than street parking as they tend to be more accessible

However - I do like the outlook over the lakefront.

Are there any plans for beach sports or better beach space for sunning/swimming?

define  
enhance  
sustain

I am definitely concerned that parking by playground is not overlook on a weekly basis by sports like soccer.

ADEQUATE WHEELCHAIR ACCESSIBLE parking spaces

Landscape  
Architects  
Planners  
Engineers

**Kennedy/Pennoyer Park Public Information Meeting #2.2**  
**Journey Church**  
**Kenosha, WI**

**4-9-14**  
**Agenda**

6:00 pm – Doors open, Welcome and Introductions

6:05 pm – Recap of PIM #1 Findings and Design Program

6:30 pm – Presentation of Preliminary Concepts

7:15 pm – Wrap Up/Questions

7:30 pm – Adjourn

**Comments:**

Concept A - Kennedy

Add lookouts one either end

Concept B for Pennoyer

But Add Add Bridge/Parking  
in Alfred

have minimal lighting  
along walk/Bike path.  
And parking lots -

make 5th accessible -

define  
enhance  
sustain



DESIGN GROUP

*Miss Sheehan  
Kenosha History Center  
don@kenoshahistorycenter.org*

Landscape  
Architects  
Planners  
Engineers

**Kennedy/Pennoyer Park Public Information Meeting #2.2  
Journey Church  
Kenosha, WI**

**4-9-14  
Agenda**

- 6:00 pm – Doors open, Welcome and Introductions
- 6:05 pm – Recap of PIM #1 Findings and Design Program
- 6:30 pm – Presentation of Preliminary Concepts
- 7:15 pm – Wrap Up/Questions
- 7:30 pm – Adjourn

**Comments:**

---



---



---

*I like Concept A Amphitheater*

---

*Concept B Bike/Ped Bridge*

---

*Able to expand parking as needed*

---



---

define  
enhance  
sustain

Landscape  
Architects  
Planners  
Engineers

**Kennedy/Pennoyer Park Public Information Meeting #2.2**  
**Journey Church**  
**Kenosha, WI**

**4-9-14**  
**Agenda**

- 6:00 pm – Doors open, Welcome and Introductions
- 6:05 pm – Recap of PIM #1 Findings and Design Program
- 6:30 pm – Presentation of Preliminary Concepts
- 7:15 pm – Wrap Up/Questions
- 7:30 pm – Adjourn

**Comments:**

Keep dual walkways along lakefront

Position parking lots away from homes when possible

Maximize space for Accessible Playground – this is a unique concept to bring people to Kenosha and help the disabled

Shade for amphitheater

Landscape beach to protect against blowing sand

define  
enhance  
sustain

Landscape  
Architects  
Planners  
Engineers

PIM #3.1 Sign-In  
Kenosha Public Museum  
Kenosha, WI  
July 22, 6:00-7:00 PM

CHAD HEINZELMAN 4103 24<sup>TH</sup> AVE

KL Moore 427-9 ST

JAMES MOORE 427-9<sup>TH</sup> ST.

Pet Tomshack 515 39<sup>th</sup> ST

Ron DeFisher 3524-9<sup>th</sup> av.

Liz + Ed Carlson 1429-42 ave. Keno.

Steve ~~Atto~~ Mitchell 2424-14<sup>th</sup> ST KENOSHA

Pat Shumaker 4122 6<sup>th</sup> Ave

define  
enhance  
sustain

Landscape  
Architects  
Planners  
Engineers

**PIM #3.1 Sign-In**  
**Kenosha Public Museum**  
Kenosha, WI  
July 22, 6:00-7:00 PM

Connie Honzey 514 40 pl. Kenosha  
 Joann Bella 510-40<sup>th</sup> St Kenosha  
 Barbara Wrablewski 3916 5<sup>th</sup> Ave Kenosha  
 John + Mary Jane Weiss 4539-5<sup>th</sup> Ave Kenosha  
 John + Kathryn Murreth 4209 5<sup>th</sup> Ave Kenosha  
 Debra Gifford 4111-6<sup>th</sup> Avenue Kenosha  
 RITA CHIAPPETTA 3802-5 AVENUE KENOSHA  
 JIM BAUBONIS 418 56<sup>th</sup> St #313  
 Lewis Lindquist 1000-55<sup>th</sup> St  
 John Jambeck 515-39<sup>th</sup> St  
 DAVID McRoberts 3806-5<sup>th</sup> Ave  
 Carol Shames 419 54<sup>th</sup> St Kenosha  
 JANE HARRINGTON-HEIDE 4715 7<sup>th</sup> Ave KENOSHA

define  
enhance  
sustain

Landscape  
Architects  
Planners  
Engineers

PIM #3.1 Sign-In  
Kenosha Public Museum  
Kenosha, WI  
July 22, 6:00-7:00 PM

Art Maurer	<del>3802</del> 3802-5 <sup>th</sup> Ave.
Bruce McCurdy	4206 6 <sup>th</sup> Ave
Richard J. Angelo	1904-74 <sup>th</sup> PLACE
Mike Lums	625 52 <sup>nd</sup> ST.
Peggy & Xerys Schmael	4302-5 AV
Kim Leipzig & Scott Plevanich	4103 5 <sup>th</sup> Ave
KEAT HERBION	4628-5 AVE
GARY STAUDACH	4301 6 <sup>th</sup> AV
Dick Lynch	3624 Sh. Rd 53140
Karen Meidanus	4121-5 <sup>th</sup> AV.
Beuel T Balle	510-40 <sup>th</sup> Pl.
Christopher Eckhardt	4103-6 <sup>th</sup> Ave
Grix Haugwood	3818 5 <sup>th</sup> Ave
Lynn DeRoman	424 44 <sup>th</sup> street
Ed Burman	424 44 <sup>th</sup> ST
Dorie Westraep	4056 5 <sup>th</sup> Ave
Vicky Baldwin	4054 6 <sup>th</sup> Ave.
John Fox	4803 7 <sup>th</sup> Ave
Jammy J Conforto	8547-33 <sup>rd</sup> Ave

define  
enhance  
sustain

Landscape  
Architects  
Planners  
Engineers

PIM #3.2 Sign-In  
Journey Church  
Kenosha, WI  
July 23, 6:00-7:00 PM

Mike Lemus 625 52<sup>nd</sup> St (262)653-9147

Dana Anderson 3312-75<sup>th</sup> St. 262-818-9554

MARK MAURER 4010 6<sup>th</sup> AVE 262 945 1574

Jim Nicolai 4006 - 5<sup>th</sup> Ave 657-4400

Tom LaDuke 4006 - 5<sup>th</sup> Ave 8488503

CARLA JOHNSON 4102 5<sup>th</sup> Ave. 262-945-3222

Kurt Wicklund 6913 27<sup>th</sup> Ave 344-2472

MARR MODORY 5738-38<sup>th</sup> AV 654-6752

JACK ROSE 4315-68<sup>th</sup> 53142 605-9038

Tammy J Conforti 8547-33<sup>rd</sup> Ave 948-1956

Julius Fox 4803 - 7<sup>th</sup> Ave

Greg Stone 4301 6<sup>th</sup> Ave Kenosha

Dave Paff Aft #6 1606 35<sup>th</sup> Place Kenosha

Charles Vite 7815-Pershing Blvd Kenosha

ERIC JAKUBOWSKI 4201 5<sup>th</sup> Ave Kenosha

define  
enhance  
sustain







Landscape  
Architects  
Planners  
Engineers

PIM #3.2 Sign-In  
Journey Church  
Kenosha, WI  
July 23, 6:00-7:00 PM

*Karen Breidanus 4121 5th Ave 6581478*

Multiple horizontal lines for sign-in entries.

define  
enhance  
sustain



## **Exhibit D 1-4 - Visual Preference Survey Results**













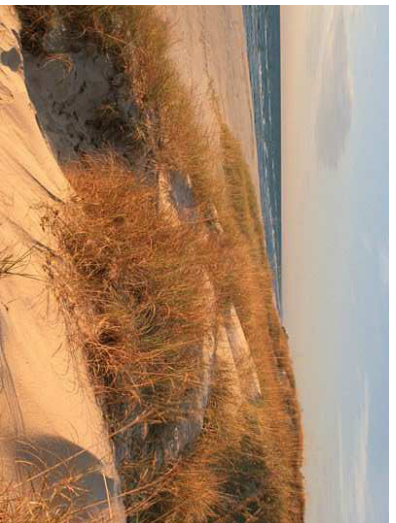






## Exhibit E 1-2 - Preliminary Concept Plans

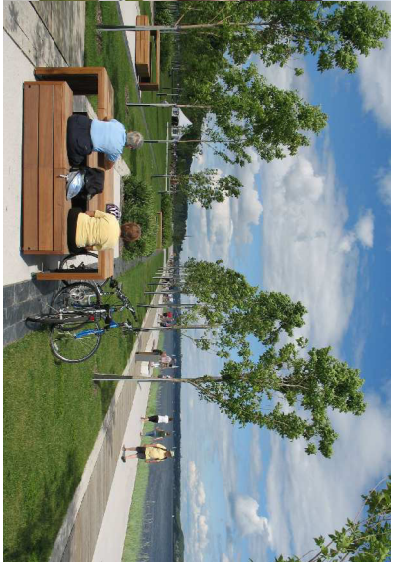




File: P:1250012546







## Exhibit F - Master Plan





Bike/Ped Bridge



Amphitheater Seating



Tree Lined Lakefront Path with Gathering Nodes



Bandshell



**MASTER PLAN**

## Exhibit G - Amphitheater Section





## Exhibit H - Cost Estimate





**COST ESTIMATE**



Project: **Pennoyer Park Master Plan** Date: July, 23 2014  
 Project Number: **2546.01** Estimated by: cn/km  
 Cost Estimate Status: **Master Plan** Approved by: bt

Item	Qty.	Unit	Unit cost	Item Total	Comments	
<b>Demolition</b>						
1	General site clearing	1	ls	\$5,000.00	\$5,000.00	
2	Strip topsoil	1	ls	\$20,000.00	\$20,000.00	
3	Mass grading	1	ls	\$40,000.00	\$40,000.00	
4	Erosion control	1	ls	\$7,000.00	\$7,000.00	track pad \$2000, 2500lf silt fence
5	Dunes Earthwork	6400	cy	\$25.00	\$160,000.00	imported fill and earthwork
<b>Total</b>				<b>\$232,000.00</b>		
<b>Hardscape</b>						
6	Asphalt Parking Lot & Street	2,100	ton	\$85.00	\$178,500.00	4" asphalt pavement; 2.5" binder, 1.5" surface course
7	Parking Lot & Street Base	4,000	ton	\$20.00	\$80,000.00	8" depth compacted aggregate base
8	Concrete sidewalk	4,600	sf	\$7.00	\$32,200.00	Scored concrete pavement, includes base
9	Asphalt path system	600	ton	\$85.00	\$51,000.00	3" asphalt 10' wide path
10	Base course	1,550	ton	\$20.00	\$31,000.00	8" depth compacted aggregate base
11	Overlook area pavement	300	sf	\$7.00	\$2,100.00	Scored concrete pavement, includes base
12	Pavement Markings	1	ls	\$10,000.00	\$10,000.00	Striping, ADA symbols
<b>Total</b>				<b>\$384,800.00</b>		
<b>Site Amenities</b>						
13	Main shelter	1	ea	\$50,000.00	\$50,000.00	Restrooms, masonry and wood shelter
14	Playground	1	ls	\$20,000.00	\$20,000.00	Repair existing playground
15	Soccer goals	2	ea	\$1,500.00	\$3,000.00	Goals and net
16	Main field seeding	6,000	sy	\$2.00	\$12,000.00	Soccer field and rugby pitch seed and mulch (wear and tear 80/20 mix)
17	Lighting	1	ls	\$60,000.00	\$60,000.00	Pedestrian, parking and security lighting
18	Benches	10	ea	\$1,000.00	\$10,000.00	City standard
19	Picnic tables	10	ea	\$1,000.00	\$10,000.00	City standard
20	Trash/recycling receptacles	10	ea	\$800.00	\$8,000.00	City standard
21	Signage	1	ls	\$6,000.00	\$6,000.00	ADA signs, stop signs, no parking signs
22	Pedestrian Bridge	1	ls	\$150,000.00	\$150,000.00	
23	Ampitheater	1	ls	\$100,000.00	\$100,000.00	stone seating and earth work
24	Ampitheater Shade Structure	1	ls	\$50,000.00	\$50,000.00	shade kites
<b>Total</b>				<b>\$479,000.00</b>		
<b>Landscape</b>						
25	Lawn seeding	13,500	sy	\$1.00	\$13,500.00	Seed and mulch
26	Dune Grass	8,600	sy	\$4.50	\$38,700.00	Groundcovers, grasses, perennials
27	Trees and shrubs	1	ls	\$10,000.00	\$10,000.00	Includes mulch and bed preparation
<b>Total</b>				<b>\$62,200.00</b>		
<b>Total</b>				<b>\$1,158,000.00</b>		
15% Contingency				\$173,700.00		
				<b>\$1,331,700.00</b>		

Notes:

1. No permitting is included in this estimate.



## Exhibit I - Existing Conditions



