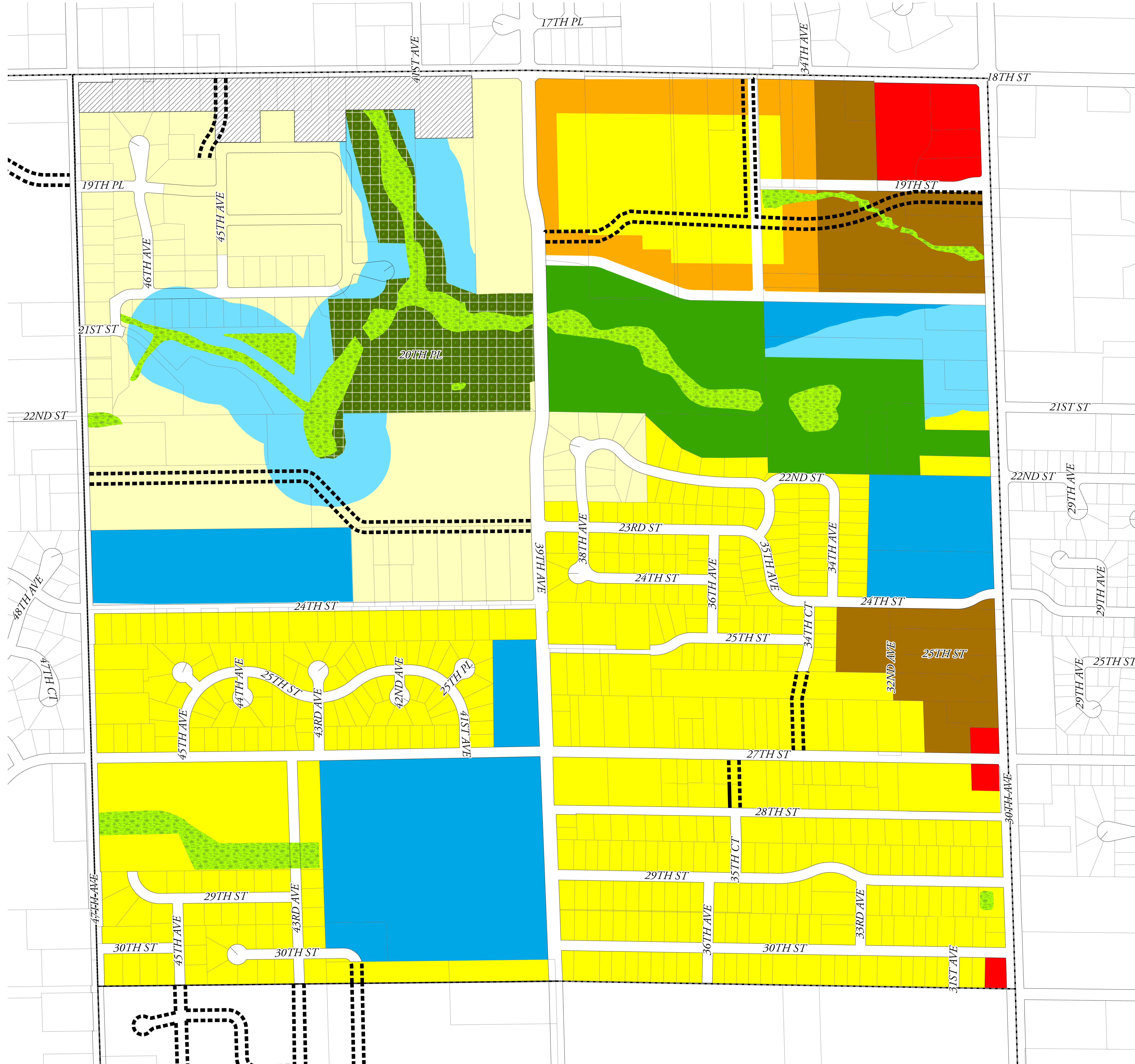








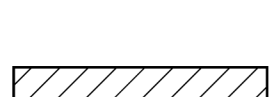


City of Kenosha

St. Peter's Neighborhood Plan

Adopted Plan



-  St. Peter's Neighborhood Boundary
-  Detached Single-Family Residential (17,000 sq ft minimum lots)
-  Detached Single-Family Residential (10,000 sq ft minimum lots)
-  Attached Single-Family Residential (less than 6 dwelling units per acre)
-  Low Density Multi-Family (less than 8 dwelling units per acre)
-  Commercial / Office
-  Institutional / Utility
-  Shorelands
-  Wetlands
-  Woodlands
-  Park / Open Space
-  Somers Area "A"
-  Future Streets

Comprehensive Plan Certificate	
City Plan Commission Resolution *	Date Adopted: 2-18-1993
Location:	St. Peter's Neighborhood Plan
North:	18 th Street
South:	30 th Street
East:	30 th Avenue
West:	47 th Avenue
Amendments	
City Plan Commission Resolution **	Date Adopted: 2-25-1993
Location:	Various properties located between 29 th and 30 th Streets and between 30 th and (future) 31 st Avenues
Change:	Amended from Single-Family Residential (minimum 10,000 square foot lots) to Commercial/Office
City Plan Commission Resolution 2-93	Date Adopted: 9-25-1993
Location:	Properties on southwest corner of 30 th Street and 30 th Avenue
Change:	Amended from Single-Family Residential (Minimum 10,000 square foot lots) to Commercial/Office
City Plan Commission Resolution 6-02	Date Adopted: 11-7-2002
Location:	Various properties located west of 30 th Avenue between 29 th and 30 th Streets
Change:	Various amendments to the Adopted St. Peter's Neighborhood Plan
City Plan Commission Resolution 4-05	Date Adopted: 9-8-2005
Location:	Various properties located south of 19 th Street between 30 th and 39 th Avenues
Change:	Various amendments to the Adopted St. Peter's Neighborhood Plan
City Plan Commission Resolution 8-05	Date Adopted: 10-6-2005
Location:	Near the northwest corner of 27 th Street and 30 th Avenue
Change:	Amended from Commercial/Office to Multiple-Family Residential
City Plan Commission Resolution 12-20	Date Adopted: 11-5-2020
Location:	At the southwest corner of 18 th Street and 30 th Avenue
Change:	Amended from Shoreland, Wetlands and Woodlands to Detached Single-Family Residential (minimum 17,000 square foot lots)
Future Streets	
Common Council Commission Resolution 67-93	Date Adopted: 4-19-1993
Location:	St. Peter's Neighborhood Plan
Change:	To amend the Official Map for the designation of future streets within the St. Peter's Neighborhood
Note:	All public rights-of-way are 60 feet in width and dedicated as Future Streets on the Official Map
Common Council Commission Resolution 188-99	Date Adopted: 12-6-1999
Location:	St. Peter's Neighborhood Plan
Change:	To amend the Official Map for the designation of 35 th Avenue, south of 19 th Street, as a future street
Note:	All public rights-of-way are 60 feet in width and dedicated as Future Streets on the Official Map
Common Council Commission Resolution 10-16	Date Adopted: 1-20-2016
Location:	St. Peter's Neighborhood Plan
Change:	To amend the Official Map for the designation of 23 rd Street, between 30 th and 30 th Avenues, as a future street
Note:	All public rights-of-way are 60 feet in width and dedicated as Future Streets on the Official Map

* No Resolution number was used to adopt the plan
 ** No Resolution number was used to amend the Adopted Plan

